

KF-40

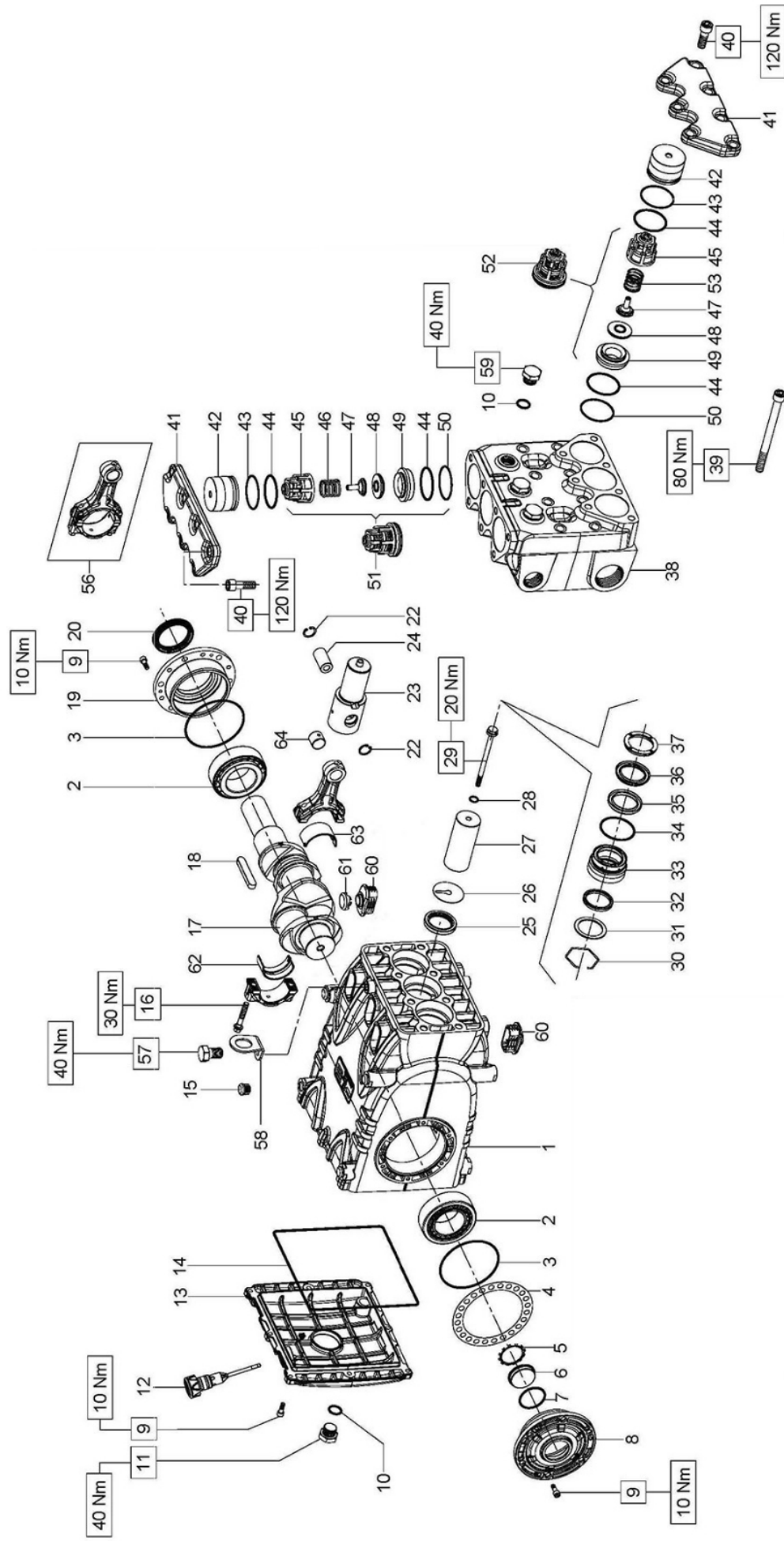


Parts list and expanded view

Liste des pièces et vue éclatée

Despiece – lista de partes

## ELEPUMP KF-40 EXPLODED DRAWING AND PART LIST



*PART NUMBERS*

*ELEPUMP KF-40 SPARE PARE KIT LIST*

<b>ASSY</b>	<b>DESCRIPTION</b>	<b>PART NUMBER</b>	<b>KIT NUMBER</b>
A	Plunger packing kit KF40	36-101-03	Kit 2020
B	Intake valve kit KF	36-101-02	Kit 2012
C	Discharge valve kit KF	36-101-01	Kit 2013
D	Complete seals kit KF40	36-101-05	Kit 2021

<b>VIEW REFERENCE</b>	<b>DESCRIPTION</b>	<b>PART NUMBER</b>	<b>KIT</b>	<b>QTY REQUIRED</b>
	Pump KF40	30-101		-
1	Pump crankcase KF	31-101-001		1
2	Roller bearing 33210/Q KF	31-101-002		2
3	O-ring 94.92 X 2.62 KF	31-101-003	D	2
4	Shim 0.1 KF	31-101-004A		-
4	Shim 0.25 KF	31-101-004B		-
5	Ring ZI45 KF	31-101-005	D	1
6	Oil sight glass KF	31-101-006		1
7	O-ring 39.34 X 2.62 KF	31-101-007	D	1
8	Oil level indicator side cover KF	31-101-008		1
9	Screw M6 X 18 KF	31-101-009		20
10	O-ring 17.13x2.62 KF	31-101-010	D	4
11	Plug, G1/2 X 13 zinc KF	31-112-034		1
12	Dipstick KF	31-101-012		1
13	Crankcase cover KF	31-101-013		1
14	O-ring 215 X 3mm KF	31-101-014	D	1
15	Plug D.15 port KF	31-101-015		4
16	Connecting rod screw KF	31-101-016		6
17	Crankshaft KF	31-101-017		1
18	Crankshaft key KF	31-101-018		1
19	Motor side bearing cover KF	31-101-019		1
20	Oil seal 50 X 6.5 X 8 viton KF	31-101-020	D	1
22	Ring D.20 KF	31-101-022		6
23	Piston guide KF	31-101-023		3
24	Pin 20 X 38 KF	31-101-024		3
25	Seal 38 X 52 X 7 KF	31-101-025	D	3
26	Wiper KF	31-101-026		3
27	Plunger KF40	31-101-027		3
28	O-ring 11x2-990 SH KF	31-101-028	D	3
29	Plunger bolt KF	31-101-029		3
30	Ring D.52 KF	31-101-030		3
31	Packing ring KF40	31-101-031		3
32	Packing low pressure KF40	31-101-032	A-D	3

**ELEPUMP KF-40 PART NUMBERS**

<b>VIEW REFERENCE</b>	<b>DESCRIPTION</b>	<b>PART NUMBER</b>	<b>KIT</b>	<b>QTY REQUIRED</b>
33	Packing support KF40	31-101-033		3
34	O-ring 52.07X2.62 NBR 70 SH KF	31-101-034	A-D	3
35	Restop ring KF40	31-101-035	A-D	3
36	Packing high pressure KF40	31-101-036	A-D	3
37	Front ring KF40	31-101-037	D	3
38	Manifold for D.40 plunger	31-101-038		1
39	Screw M12 X 150 KF	31-101-039		8
40	Screw M12 X 35 KF	31-101-040		14
41	Valve cover KF	31-101-041		2
42	Valve plug KF	31-101-042		6
43	Back-up ring 50.9 X 55 X 1.5 KF	31-101-043	D	6
44	O-ring 48.89 X 2.62 KF	31-101-044	D	12
45	Suction delivery valve guide stainless	31-101-045-SS		6
46	Delivery valve spring KF	31-101-046		3
47	Internal valve guide KF	31-101-072		6
48	Suction/delivery valve disk KF w/rubber	31-101-047		6
48A	<b>OPTION</b> Suction/delivery valve disk KF w/SS	31-105-061		6
49	Suction/delivery valve seat KF	31-101-048		6
50	Back-up ring 49.5 x 5.54 x 1.5 KF	31-101-049	D	6
51	Delivery valve assy KF w/rubber seal	31-101-050		3
51A	<b>OPTION</b> Delivery valve assy KF w/SS valve disk	31-101-050S	C	3
52	Suction valve assy KF w/rubber seal	31-101-051	C	3
52A	<b>OPTION</b> Suction valve assy KF w/SS valve disk	31-101-051S	B	3
53	Suction valve spring KF	31-101-052	B	3
56	Connecting rod complete KF	31-101-021		3
57	Screw M12 X 25 KF	31-101-077		1
58	Lifting eyebolt KF	31-101-057		1
59	Oil drain plug KF	31-101-058		3
60	Vent plug KF	31-101-074		6
61	Vent plug dust cap KF	31-101-075		3
62	Connecting rod bearing Inf. KF	31-101-060		3
62A	<b>OPTION</b> Connecting rod bearing Inf. +0.25mm KF	31-101-078		3
62B	<b>OPTION</b> Connecting rod bearing Inf. +0.50mm KF	31-101-079		3
63	Connecting rod bearing Sup. KF	31-101-061		3
63A	<b>OPTION</b> Connecting rod bearing Sup. +0.25mm KF	31-101-080		3
63B	<b>OPTION</b> Connecting rod bearing Sup. +0.50mm KF	31-101-081		3
64	Connecting rod bushing KF	31-101-082		1