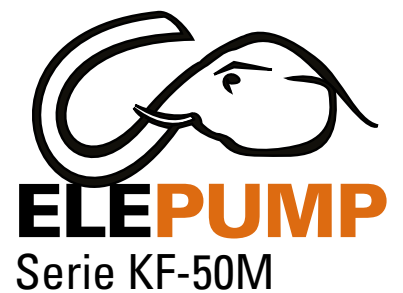
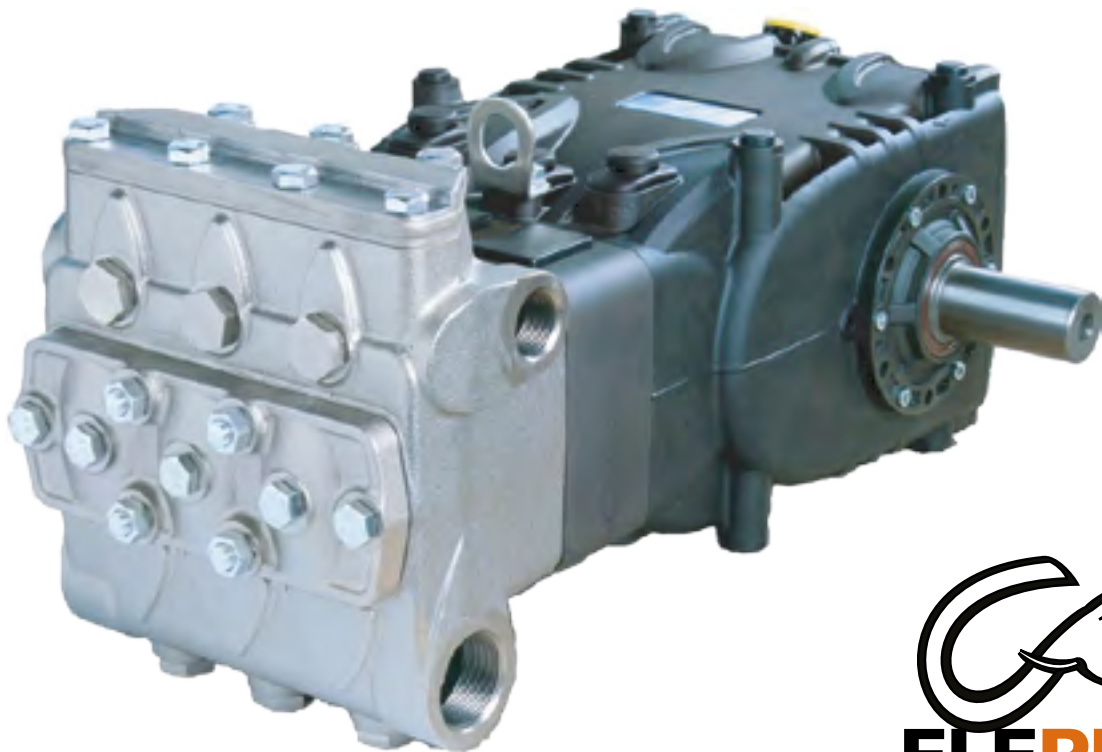


Elepump Serie KF-50M

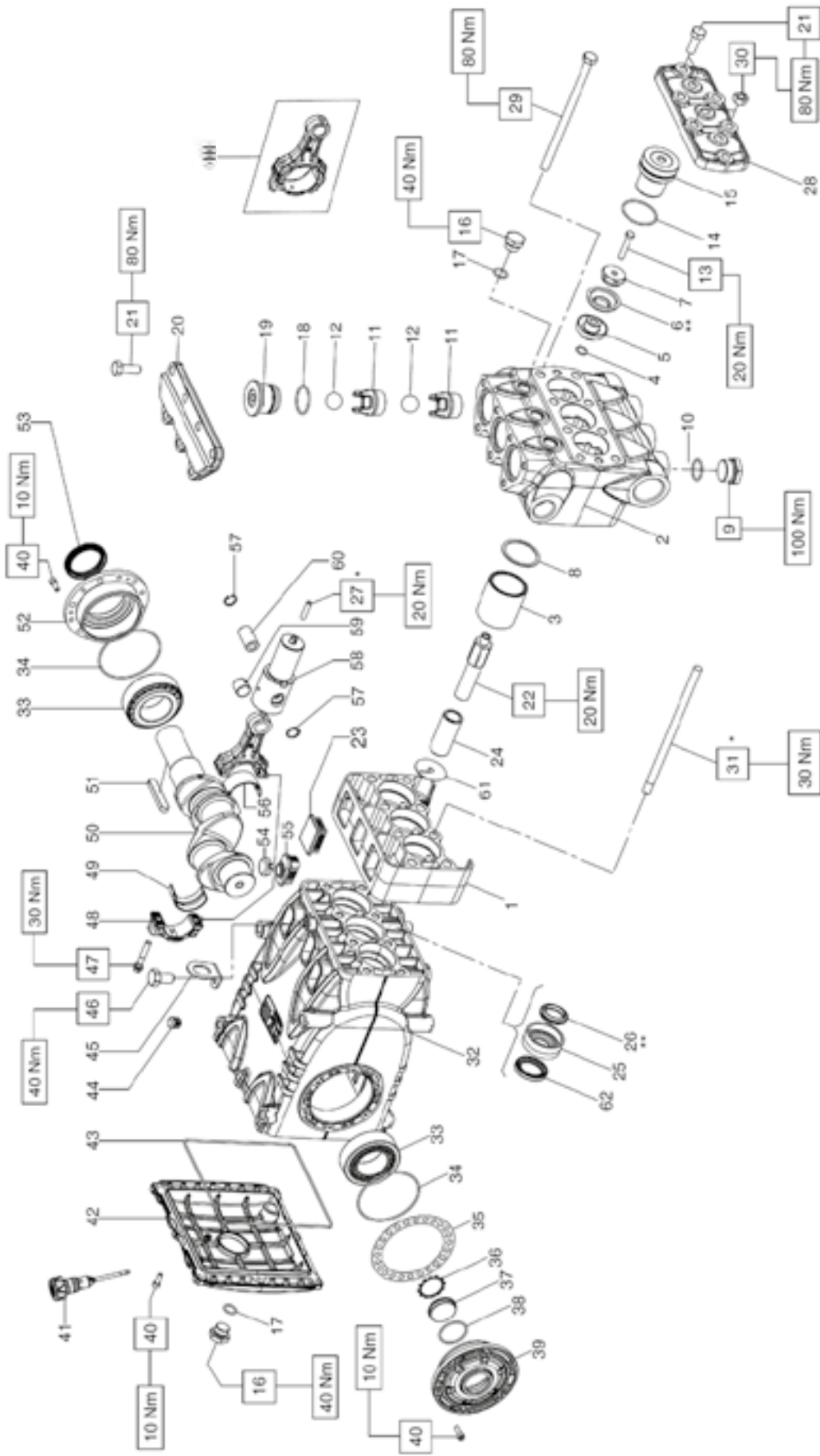
Parts list and exploded view



FORDIA[®]

Powered by Epiroc

Exploded drawing and part list



Part numbers

Elepump KF-50M spare part kit list

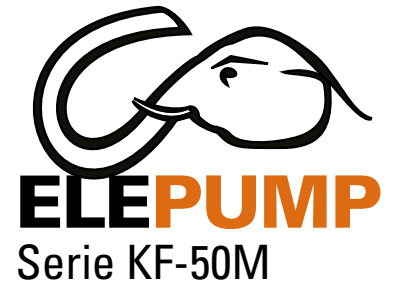
Assy	Description	Part Number	Kit Number
A	Valves kit KF50M	9469709437	Kit 2223
B	Piston seal kit KF50M	9469709438	Kit 2224
C	Piston rebuilt kit KF50M	9469709439	Kit 2225
D	Complete seals kit KF50M	9469709440	Kit 2226
E	Conrod bushing kit standard	9469709441	Kit 2135

View Reference	Description	Part Number	Kit	Qty
1	Spacer, manifold KF50M	9469709226		1
2	Manifold NPT KF50M	9469709228		1
3	Cylinder 50mm KF50M	9469709214	C	3
4	O-ring 15.0 X 2.0 NBR 70 SH KF50M	9469709224	A-C-D	3
5	Support piston, packing KF50M	9469709215		3
6	Packing, piston, cup KF50M	9469709225	A-C	3
7	Connector, piston support KF50M	9469709216		3
8	Washer 50 X 60.4 X 1.5 KF50M	9469709217	C-D	3
9	Plug, G 1" X 17 KF50M	9469709229		3
10	O-ring 28.25 X 2.62 NBR 70 SH KF50M	9469709230	B-D	3
11	Valve seat KF50M	9469709218	B	6
12	Ball, valve 25.4 (1") KF50M	9469709219	B	6
13	Bolt, M8X45 UNI 5737 KF50M	9469709220		3
14	O-ring 52.07 X 2.62 NBR 70 SH KF40/KF50M	9469709071	A-B-C-D	3
15	Plug, cap, piston KF50M	9469709221		3
16	Plug, G1/2 X 13 nickel KF50M	9469709242		1
17	O-ring 0.674 ID X 0.103 KF40/KF50M	9469709047	D	4
18	O-ring 1.549 ID X 0.103 CS KF40/KF50M	9469709044	B	3
19	Plug, cap, valve KF50M	9469709222		3
20	Cover, valve plate KF50M	9469709231		1
21	Bolt M12 X 35 UNI 5737 KF50M	9469709232		12
22	Piston support KF50M	9469709233		3
23	Cap, plastic 47 X 35 X 12.5mm KF50M	9469709234		3
24	Piston 30 X 70 KF50M	9469709235		3
25	Support, LPS KF50M	9469709236		3
26	Seal 30 X 43 X 8.5mm KF50M	9469709237	C-D	3
27	Bolt, stud, SS M7 X 32, 71 series KF50M	9469709238		3
28	Cover, piston KF50M	9469709239		1
29	Bolt, M12 X 220 UNI 5737 KF50M	9469709240		4

Part numbers

View reference	Description	Part Number	kit	Qty
30	Nut, M12 X 19 X 10 UNI 5588, zinc KF50M	9469709241		4
31	Bolt, spacer M12 X 233 KF50M	9469709223		4
32	Pump crankcase KF40/KF50M	9469709036		1
33	Roller bearing 33210/Q KF40/KF50M	9469709037		2
34	O-ring 94.92 X 2.62 KF40/KF50M	9469709038	D	2
35A	OPTION Shim 0.1 KF40/KF50M	9469709039		-
35B	OPTION Shim 0.25 KF40/KF50M	9469709040		-
36	Washer notched 45mm KF40/KF50M	9469709042	D	1
37	Spacer KF40/KF50M	9469709043		1
38	O-ring 39.34 X 2.62 KF40/KF50M	9469709044	D	1
39	Oil level indicator side cover KF40/KF50M	9469709045		1
40	Screw Tcei M6 X 18 KF40/KF50M	9469709046		20
41	Oil cap 21.5 X 91 KF40/KF50M	9469709049		1
42	Crankcase cover KF40/KF50M	9469709050		1
43	O-ring 215 X 3mm KF40/KF50M	9469709051	D	1
44	Plug D.15 port KF40/KF50M	9469709052		4
45	Lifting eyebolt KF40/KF50M	9469709095		1
46	Bolt, M12 X 25, UNI 5739 KF40/KF50M	9469709105		1
47	Connecting rod screw KF40/KF50M	9469709053		6
48	Connecting rod KF40/KF50M	9469709058		3
49	Connecting rod bearing KF40/KF50M new/s	9469709097	E	3
50	Crankshaft KF40/KF50M	9469709054		1
51	Crankshaft key KF40/KF50M	9469709055		1
52	Motor side bearing cover KF40/KF50M	9469709056		1
53	Oil seal 50 X 6.5 X 8 viton KF40/KF50M	9469709057	D	1
54	Vent plug dust cap KF40/KF50M	9469709104		3
55	Vent plug KF40/KF50M	9469709103		3
56	Babbit bushing KF40/KF50M	9469709098	E	3
57	Ring D.20 KF40/KF50M	9469709059		6
58	Piston guide KF40/KF50M	9469709060		3
59	Bushing, bronze KF40/KF50M	9469709106		3
60	Pin 20 X 38 KF40/KF50M	9469709061		3
61	Wiper KF40/KF50M	9469709063		3
62	Seal 38 X 52 X 7 KF40/KF50M	9469709062	D	3
64	Plug G 1/2 X 10 TE27 ZINC KF40/KF50M	9469709048		3

Copyrights



Copyright di queste istruzioni operative è di proprietà di Interpump Group.

Le istruzioni contengono descrizioni tecniche ed illustrazioni che non possono essere elettronicamente copiate e neppure riprodotte interamente od in parte né passate a terzi in qualsiasi forma e comunque senza l'autorizzazione scritta dalla proprietà. I trasgressori saranno perseguiti a norma di legge con azioni appropriate.

Copyright of these operating instructions is property of Interpump Group.

The instructions contain technical descriptions and illustrations which may not be entirely or in part copied or reproduced electronically or passed to third parties in any form and in any case without written permission from the owner. Violators will be prosecuted according to law with appropriate legal action.

D'après les lois de Copyright, ces instructions d'utilisation appartiennent à Interpump Group.

Les instructions contiennent des descriptions techniques et des illustrations qui ne peuvent être ni copiées ni reproduites par procédé électronique, dans leur intégralité ou en partie, ni confiées à des tiers sous quelque forme que ce soit, en l'absence de l'autorisation écrite du propriétaire. Les transgresseurs seront poursuivis et punis par la loi.

Copyright-Inhaber dieser Betriebsanleitung ist Interpump Group.

Die Anleitung enthält technische Beschreibungen und Abbildungen, die nur mit vorheriger schriftlicher Genehmigung des Copyright-Inhabers elektronisch kopiert, zur Gänze oder teilweise reproduziert oder in jeglicher Form an Dritte weitergegeben werden dürfen. Bei Verstößen drohen Rechtsfolgen.

El copyright de estas instrucciones operativas es propiedad de Interpump Group.

Las instrucciones contienen descripciones técnicas e ilustraciones que no pueden ser copiadas electrónicamente ni reproducidas de modo parcial o total, así como pasadas a terceras partes de cualquier forma y sin la autorización por escrito de la propiedad. Los infractores serán procesados de acuerdo a la ley con las medidas adecuadas.

Os direitos autorais destas instruções operacionais são de propriedade da Interpump Group.

As instruções contêm descrições técnicas e ilustrações que não podem ser eletronicamente copiadas ou reproduzidas inteiramente ou em parte, nem repassar a terceiros de qualquer forma sem autorização por escrito da proprietária. Os infratores serão processados de acordo com a lei, com as ações apropriadas.

Авторские права на данные инструкции по эксплуатации принадлежат компании Interpump Group.

Инструкции содержат технические описания и иллюстрации, которые не подлежат электронному копированию, а также не могут целиком или частично воспроизводиться или передаваться третьим лицам в любой форме без письменного разрешения владельца. Нарушители будут преследоваться по закону с применением соответствующих санкций.

I dati contenuti nel presente documento possono subire variazioni senza preavviso.

The data contained in this document may change without notice.

Les données contenues dans le présent document peuvent subir des variations sans préavis.

Änderungen an den in vorliegendem Dokument enthaltenen Daten ohne Vorankündigung vorbehalten.

Los datos contenidos en el presente documento pueden sufrir variaciones sin previo aviso.

Os dados contidos no presente documento podem estar sujeitos a alterações, sem aviso prévio.

Данные, содержащиеся в этом документе, могут быть изменены без предварительного уведомления.

Cod. 71981503/2- Cod.IE 2860000131/2- 14/01/2014 - 2101



FORDIA®

Powered by Epiroc

www.fordia.com

T 514 336 9211 TF 1 800 768 7274 Email : info@fordia.com

© 2021 Fordia. All rights reserved.

2021.09