

DiscovOre Prime NO2 Surface

The DiscovOre Prime is a revolutionary coring system developed for drillers by drillers that is safer and faster than other available systems.

SAFETY

Like the regular DiscovOre, the Prime has built-in safety features that automatically engage and do not require additional manual steps, making it easier to assemble and disassemble. **Lighter by 23%** than the regular DiscovOre in NO2 size, the Prime is easier for drillers to handle.

- No spring pins and no spearhead
- Robust latches and spindle
- Improved latch engagement
- Automatic locking overshoot
- Improved conversion head for all hole orientations
- Stabilized bearing assembly

SPEED

Additionally, the Prime is faster than the DiscovOre, with a descent speed that is **up to twice as fast** as the L-Latch. Its increased inner tube retrieval speed leads to a quicker drilling cycle time and less wear and tear on wireline.

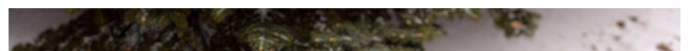
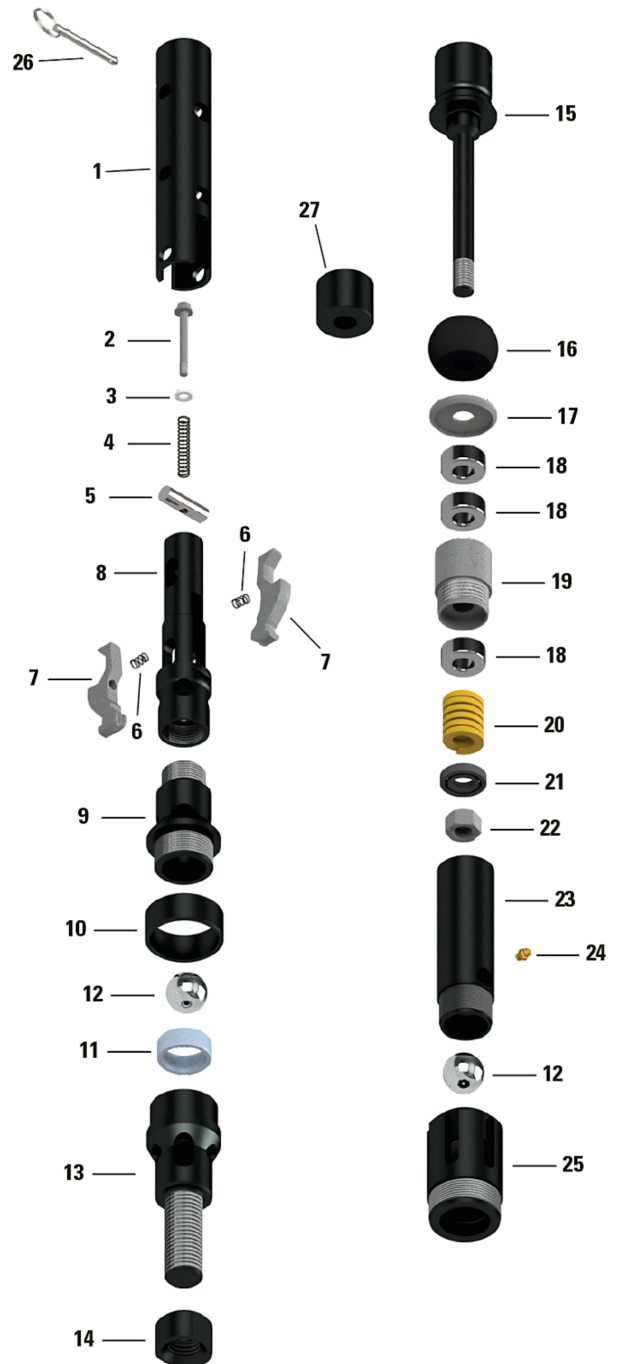
PRODUCTIVITY

The DiscovOre Prime is a premium product with a **payback that can be achieved within a couple of days** depending on drilling conditions. Contact your sales representative to inquire about the return on investment specific to your operations.



DiscovOre Prime NO2 | Assembly part list

	DISCOVERE PRIME NO2 SURFACE	3760017700
1	Retracting case	3760017418
2	Assembly bolt	3760017439
3	Wedge lock washer	3760017235
4	Spring retracting case	3760017462
5	Latch boby	3760017433
6	Latch	3760017717
7	Spring – Latch	3760017743
8	Assembly rod	3760017424
9	Mid body – Surface	3760017720
10	Chrome ball	3760017523
11	Landing indicator bushing low	3760017531
12	Landing shoulder	3760005100
13	Lower body	3760017711
14	Locknut – Spindle	3760017410
15	Spindle	3760017722
16	Shut off valve – Black	3760017748
17	Valve adjusting washer	3760017786
18	Thrust bearing	3760006470
19	Bearing housing	3760017723



20	Compression spring	3760017721
21	Ball bearing	3760017434
22	Stover nut	3760013002
23	Inner tube cap body	3760017716
24	Grease fitting	9469705073
25	Inner tube adapter	3760017714
26	Safety pin	3760017291
27	Valve spacer	3760017718



DiscovOre Prime NO2 | Case part list

NO2 case assembly	3760017789
NO2 Prime head assembly	3760017791
Retracting case	3760017418
Latch body	3760017433
Mid body	3760017720
Lower body	3760017711
Spindle	3760017722
Bearing housing	3760017723
Inner tube cap body	3760017716
Inner tube adapter	3760017793
Valve spacer	3760017718
Spindle support	3760017735
Core orientation spacer	3760017726
Core orientation inner tube adapter	3760017764
Spindle support pin	3760017737
DiscovOre tool	3760017281
ND Prime overshot assembly	3760017750
BA3S overshot head	3760017452
BA3S spares kit	3760017465
Inner tube overshot receiver	3760017781
N to B jar staff adapter	3760017744
Spearhead adapter	3760017534
Jar staff	3760015556
Bushing puller assy	3760017158
Needle bar 36"	3760017739
Inner tube EXT N2 2"	3760018010

