

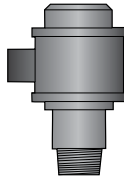
Reverse Circulation drill strings



A complete RC package

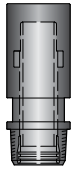
Air swivel

The side inlet swivel distributes the air in between the outer and inner tube.



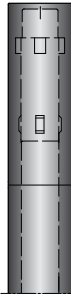
Saver sub

The saver sub protects the threads on the rotation head. The saver sub thread comes into contact with all the other threads in the drill string and should be replaced frequently to reduce the risk of a damaged thread spreading through the drill string.



Drill pipes

The dual wall pipe supplies air to the hammer through the annulus between the inner and outer pipe, and transports cuttings inside the inner tube for sampling.



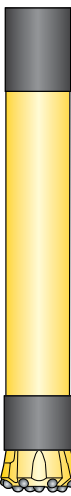
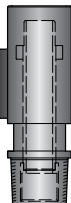
Digout sub

A digout sub is a short crossover sub between the hammer and pipes. With 4 bars, it stabilizes the hammer and prevents, and helps damages to the hammer when digging out holes which can save a stuck drill string.



Hammers

Secoroc RC hammers offer world class performance and reliability in all rock formations, with 15-20 percent higher penetration than conventional tools.



Today, reverse circulation is the preferred method for initial exploration, ore body development and in-pit grade control. This technology has gained ground for its speed, efficiency and ability to provide accurate samples for evaluation by geologists.

As a pioneer in the design and manufacturing of down-the-hole equipment and sample systems, Epiroc is a leading provider of reliable and cost effective reverse circulation system solutions.

We can provide a complete product solution, including reverse circulation drilling rigs, compressors, boosters, reverse circulation hammers and a full range of dual wall drill pipes. As a one-stop shop for reverse circulation, we can ensure optimum system performance and maximum drilling productivity whether in Greenfield exploration or in pit grade control.

The best RC pipe for Greenfield exploration

Epiroc's strategy is to offer the best RC pipe for the right application. Greenfield exploration requires pipes that can drill holes down to 600 metres in depth.

We offer friction welded pipes that gives a weight reduction up to 25 percent compared to traditional welded pipes. Due to this production method we also get a very low pressure drop-off in each coupling.

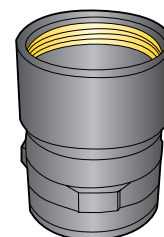
The result is potentially deeper holes with the same rig/air unit set-up. This can ensure optimum system performance, possible cost reductions and competitive advantage. That makes our recommended Greenfield offer the most suitable choice for this application on the market.

The result is potentially deeper holes for the same drilling rig capacity. With an extremely low-pressure drop off in each coupling, our RC pipes can ensure optimum system performance and cost reduction. That makes them the market's best choice of Greenfield pipes.

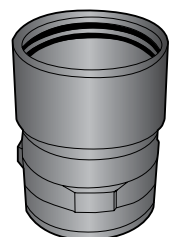
Ideal for In Pit Grade Control (IPGC)

Reverse circulation drill rigs operating on pit-grade control can only drill the equivalent of two bench levels per shift and is therefore less sensitive to the weight of each RC pipe.

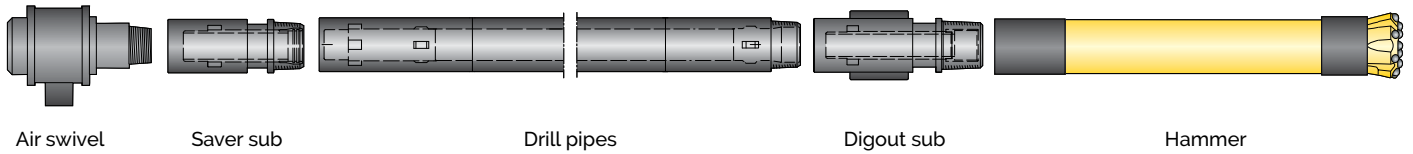
For IPGC a robust pipe with a connection that can handle a lot of wear and continuous coupling and uncoupling is needed since the required depth normally is two benches. Therefore the weight of each pipes is not important. We recommend using wear resistant pipes with a OF type seal. Our offer is built for the Epiroc D-series and DM type rigs, and gives our customers an economic and robust solution. Therefore contractors are looking for robust and economic solutions instead. That's why we have chosen the traditional welded RC pipe to match these needs. They are built for the FlexiRoc D65 RC and DML45 RC drilling rig.



OF inner tube coupling.



O-ring inner tube coupling.



RC configurator

Rig/Type of pipe	DR102	DR102OF	DR115	DR115OF	M40	M45	M45 OF	R40	R45	ECR102OF	ECR115OF
D60/65RC, L8RC	x	x	x	x	89001539	89001517	89012457	x	x	x	x
E235 (6 m)	89001442	89010238	89001396	89010263	89010208	89001560	89012457	89010309	89010279	89012576	89012570
E100 (3 m)	89001440	89010240	89001422	89010265	89010206	89001556	x	89010307	89010285	89012572	89012566
E50	89001440	89010240	89001422	89010265	89010206	89001556	x	89010307	89010285	89012572	89012566
DML (9,14 m)	x	x	x	x	x	89010365	x	x	x	x	x
Other 6 m std wrenching	89001442	89010238	89001396	89010263	89010208	89001560	89012457	89010309	89010279	89012576	89012570
Other 3 m std wrenching	89001440	89010240	89001422	89010265	89010206	89001556	x	89010307	89010285	89012572	89012566

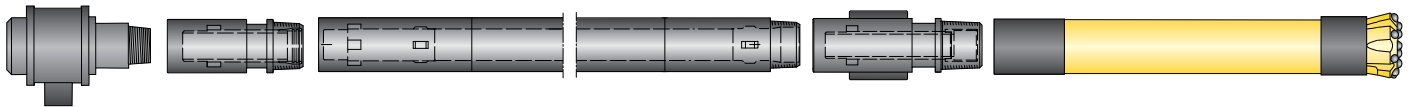
Our online RC configurator tool is easy and simple to use. With a little input to the configurator you get a complete drill string proposal. All our RC strings can be found in the configurator. This makes it a perfect tool whether you are creating your own comprehensive selection of drill string equipment or just looking for a part number.

We recommend to change the whole string from top sub/saver sub to bit sub/digout and use the same

manufacturer. Products from different manufacturers must never be used together. This may cause extensive wear or early breakages.

The RC configurator can be found here: <http://rhammer.secoroc.se>

For more information please contact your closest Epiroc customer center.



Air swivel

Saver sub

Drill pipes

Digout sub

Hammer

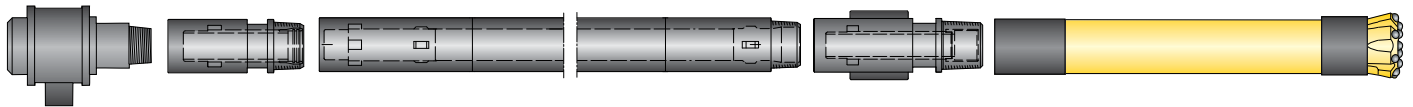
DR102 O-ring

Legend	Saver sub*	Drill pipe**	Digout sub	Hammer
Description: OD, mm = Recommended hole size Thread: Length, (s/s) Weight: Prod. No: Product code:	Saver sub compl. M45 BOX x DR102 PIN 89010234 355-2114-60-030-01-C44,41 Inner tube M45 BOX x DR102 PIN 890102333 300-1048-00-030-01-R44,41 OR Saver sub compl. 4½" IF BOX x DR102 PIN, 89001445 341-2114-60-030-01-C44,41 Inner tube 4½" IF BOX x DR102 PIN 89001446 300-1048-00-030-01-R44,41 Seal O-ring 56 x 4 mm 89001460 0663-561180	RC drill pipe, 3 m compl. DR102 89001440 260-102-0300-R00-L0,40-06 Inner tube DR102 89001441 200-048-0300-I00-L0,40-06 OR RC drill pipe, 6 m compl. DR102 89001442 260-102-0600-R00-L0,40-06 Inner tube DR102 89001443 200-048-0600-I00-L0,40-06 Circlip SGH 77 89001444 0663-561170 Seal O-ring 56 x 4 mm 89001460 0663-561180	Digout sub DR102 BOX x R45 PIN OD = 120 mm (4¾") 89001455 360-2114-66-018-10-P44,41 Inner tube DR102 BOX x R45 PIN 89001506 300-3044-00-020-01-R00,41 Circlip SGH 77 89001444 0663-561170 Seal O-ring 56 x 4 mm 89001460 0663-561180 Digout sub, 2 m DR102 x R45 PIN OD = 132 mm (5³/₁₆") 89001505 360-2132-66-020-10-P44,41 Inner tube 89001506 300-3044-00-020-01-R00,41 Circlip SGH 77 89001444 0663-561170 Seal O-ring 56 x 4 mm 89001460 0663-561180	COP RC45 Outside diameter OD = 120 mm Thread = R45 Length without drill bit = 803 mm Weight without drill bit = 41 kg 89011483 9704-RC-00-66B-91-000 RC 50 Outside diameter OD = 130 mm Thread = R45 Length without drill bit = 1152 mm Weight without drill bit = 72 kg 52292273 9705-RC-00-66B-97-000

*Saver sub connections depends on rig connection thread.

**Drill pipe connections depends on feed length on the rig.

Accessories	Product No.	Product code	Description	Thread
Blow down sub, DR102	89001451	360-2102-60-017-01-S00,41	Blowdown sub, complete	DR102
Hoist plug, DR102	On request	On request	Hoist plug	DR102



Air swivel

Saver sub

Drill pipes

Digout sub

Hammer

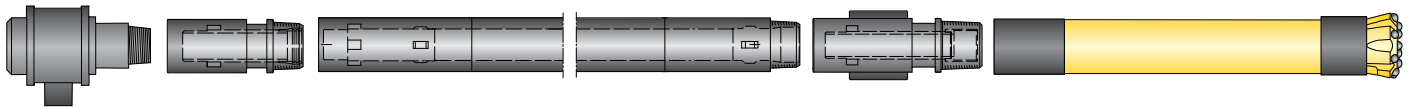
DR102 O-ring free

Legend	Saver sub*	Drill pipe**	Digout sub	Hammer
Description: OD, mm = recommended hole size Thread: Length, (s/s) Weight: Prod. No: Product code:	Saver sub compl. M45 BOX x DR102OF PIN 89010234 355-2114-60-030-01-C44,41 Inner tube M45 BOX x DR102OF 89010233 300-1048-00-030-01-R44,41 OR Saver sub compl. 4½" IF BOX x DR102OF PIN 89010236 341-2114-60-030-01-C44,41 Inner tube 4½" IF BOX x DR102OF 89010235 300-1048-00-030-01-R44,41 Seal Innertube seal 89010225 0663-561180	RC drill pipe, 3 m compl. DR102OF 89010240 2A2-102-0300-R01-L0,40-06 Inner tube DR102OF 89010239 200-048-0300-I00-L0,40-06 OR RC drill pipe, 6 m compl. DR102OF 89010238 260-102-0600-R00-L0,40-06 Inner tube DR102OF 89010237 200-048-0600-I00-L0,40-06 Circlip SGH 77 89001444 0663-561170 Seal Innertube seal 89010225 0663-561180	Digout sub DR 102OF BOX x R45 PIN OD = 120 mm (4¾") 89010232 3A2-2114-66-018-01-P00,41 Inner tube DR102OF BOX x R45 89010231 3A2-3048-66-018-11-R00,41 Circlip SGH 77 89001444 0663-561170 Seal Innertube seal 89010225 0663-561498 Digout sub DR102OF x R45 PIN OD = 132 mm (5²/16") 89010230 3A2-2132-66-020-11-P44,41 Inner tube DR102OF BOX x R45 89010231 3A2-3048-66-018-11-R00,41 Circlip SGH 77 89001444 0663-561170 Seal Innertube seal 89010225 0663-561498	COP RC45 Outside diameter OD = 120 mm Thread = R45 Length without drill bit = 803 mm Weight without drill bit = 41 kg 89011483 9704-RC-00-66B-91-000 RC 50 Outside diameter OD = 130 mm Thread = R45 Length without drill bit = 1152 mm Weight without drill bit = 72 kg 52292273 9705-RC-00-66B-97-000

*Saver sub connections depends on rig connection thread.

**Drill pipe connections depends on feed length on the rig.

Accessories	Product No.	Product code	Description	Thread
Blow down sub, DR102	89001451	360-2102-60-017-01-S00,41	Blowdown sub, complete	DR102
Hoist plug, DR102	On request	On request	Hoist plug	DR102



Air swivel

Saver sub

Drill pipes

Digout sub

Hammer

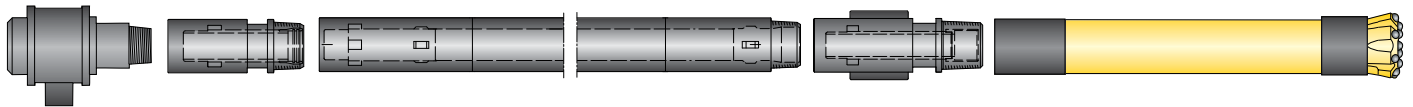
DR115 O-ring

Legend	Saver sub*	Drill pipe**	Digout sub	Hammer
Description: OD, mm = Recommended hole size Thread: Length, (s/s) Weight: Prod. No: Product code:	Saver sub compl. M45 BOX x DR115 PIN 89001400 355-2114-62-030-01-C44,41 Inner tube M45 BOX x DR115 89001401 300-1054-00-030-01-R44,41 OR Saver sub 4½" IF BOX x DR115 PIN 89001389 341-2114-62-030-01-C00,41 Inner tube 89010337 341-1054-67-030-01-R00,41 Seal O-ring 65 x 3 mm 89001447 0663-561215	RC drill pipe, 3 m compl. DR115 89001422 260-102-0300-R00-L0,40-06 Inner tube DR115 89001468 200-054-0300-100-L0,40-06 OR RC drill pipe, 6 m compl. DR115 89001396 262-114-0600-R00-L0,40-06 Inner tub DR115 89001397 262-054-0600-100-L0,40-06 Circlip SGH92 89001399 0663-561027 Seal O-ring 58,7 x 3,53 mm 89001398 0663-561028	Digout sub, compl. DR115 BOX x R45 PIN OD = 120 mm (4¾") 89012262 362-2122-66-018-10-P44,41 Inner tube DR115 x R45 89001403 300-3054-00-018-01-R00,41 Circlip SGH92 89001399 0663-561027 Seal O-ring 58,7 x 3,53 mm 89001398 0663-561028 Digout sub DR115 BOX x R45 PIN OD = 132 mm (5³/₁₆") 89001402 362-2132-66-018-10-P44,41 Inner tube DR115 x R45 89001403 362-1054-66-018-01-P00,41 Circlip SGH92 89001399 0663-561027 Seal O-ring 58,7 x 3,53 mm 89001398 0663-561028	COP RC45 Outside diameter OD = 120 mm Thread = R45 Length without drill bit = 803 mm Weight without drill bit = 41 kg 89011483 9704-RC-00-66B-91-000 RC 50 Outside diameter OD = 130 mm Thread = R45 Length without drill bit = 1152 mm Weight without drill bit = 72 kg 52292273 9705-RC-00-66B-97-000

*Saver sub connections depends on rig connection thread.

**Drill pipe connections depends on feed length on the rig.

Accessories	Product No.	Product code	Description	Thread
Blow down sub, DR115	89001406	362-2114-62-017-01-S00,41	Blowdown sub, complete	DR115
Hoist plug, DR115	89001416	362-2114-00-014-01-T00,41	Hoist plug	DR115



Air swivel

Saver sub

Drill pipes

Digout sub

Hammer

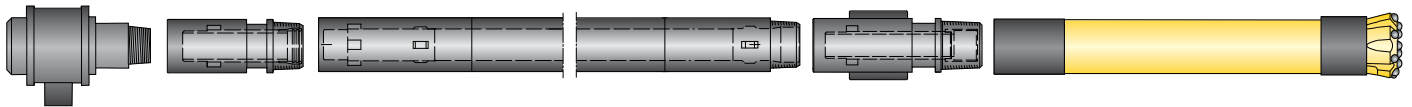
DR115 O-ring free

Legend	Saver sub*	Drill pipe**	Digout sub	Hammer
Description: OD, mm = Recommended hole size Thread: Length, (s/s) Weight: Prod. No.: Product code:	Saver sub compl. M45 BOX x DR115 PIN 89010269 355-2114-A3-030-11-C00,41 Inner tube 89010270 355-1054-A3-030-11-R00,41 OR Saver sub 4½" IF BOX x DR115OF PIN 89010271 317-2114-67-030-11-C00,41 Inner tube 4½" IF BOX x DR115OF PIN 89010272 341-1054-00-030-11-R44,41 Seal O-ring 65 x 3 mm 89001447 0663-561215	Depends on feed length RC drill pipe, 3 m compl. DR115OF 89010265 262-114-0300-R01-L0,40-06 Inner tube DR115OF 89010266 262-114-0300-R01-L0,40-06 OR RC drill pipe, 6 m compl. DR115OF 89010263 2A3-114-0600-R01-L0,40-06 Inner tube DR115OF 89010264 2A3-054-0600-I01-L0,40-06 Circlip SGH92 89010268 0663-561027 Seal Innertube seal DR115OF 89010267 0663-561028	Digout sub compl. DR115OF BOX x R45 PIN OD = 120 mm (4¾") 89012263 3A1-2122-66-020-11-P44,41 Inner tube DR115OF BOX x R45 PIN 89010274 300-3054-00-020-11-R00,41 Circlip SGH92 89010268 0663-561027 O-ring Seal DR115OF 89010267 0663-561028 Digout sub compl. DR115OF BOX x R45 PIN OD = 132 mm (5 ³ / ₁₆ ") 89010273 3A3-2132-66-018-11-P44,41 Inner tube DR115OF BOX x 4½" Remet OF 89010274 300-3054-00-018-11-R00,41 Circlip SGH92 89010268 0663-561027 O-ring Seal DR115OF 89010267 0663-561028	COP RC45 Outside diameter OD = 120 mm Thread = R45 Length without drill bit = 803 mm Weight without drill bit = 41 kg 89011483 9704-RC-00-66B-91-000 RC 50 Outside diameter OD = 130 mm Thread = R45 Length without drill bit = 1152 mm Weight without drill bit = 72 kg 52292273 9705-RC-00-66B-97-000

*Saver sub connections depends on rig connection thread.

**Drill pipe connections depends on feed length on the rig.

Accessories	Product No.	Product code	Description	Thread
Blow down sub, DR115	89001406	362-2114-62-017-01-S00,41	Blowdown sub, complete	DR115
Hoist plug, DR115	89001416	362-2114-00-014-01-T00,41	Hoist plug	DR115



Air swivel

Saver sub

Drill pipes

Digout sub

Hammer

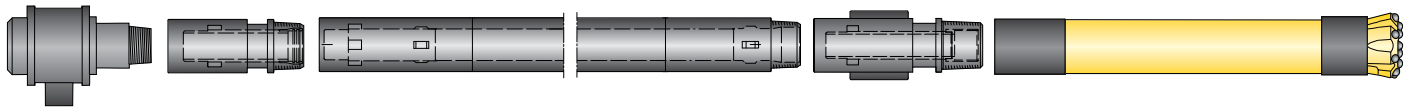
M40 O-ring

Legend	Saver sub	Drill pipe	Digout sub	Hammer
Description: OD, mm = Recommended hole size Thread: Length, (s/s) Weight: Prod. No: Product code:	Saver sub compl. M45 BOX x M40 PIN 89001532 355-2114-39-030-01-C44,41 Inner tube M45 B x M40 89001534 355-1060-39-030-01-R44,41 OR Saver sub, compl. 4½" IF BOX x M40 PIN 89010212 341-2114-39-030-01-C44,41 Inner tube 89010212 89010213 341-1048-39-030-01-R44,41 Circlip 89010210 M-CC081 Seal O-ring 57 x 3,175 mm 89010211 M-BS227	RC drill pipe, 3 m compl. M40 89010206 239-102-0300-R00-L0,40-06 Inner tube M40 89010207 239-060-0300-100-L0,40-06 OR RC drill pipe, 4 m compl. M40 D65RC 89001538 239-102-0400-R44-A0,40-08 Inner tube M40 89001539 239-060-0400-144-A0,27-06 OR RC drill pipe, 6 m std compl. M40 89001540 239-102-0600-R00-L0,40-06 OR RC drill pipe, 6 m compl. M40 D65RC 89001539 239-102-0600-R44-A0,40-08 Inner tube M40 89010209 239-060-0600-100-L0,40-06 Circlip 89010210 M-CC081 Seal O-ring 57 x 3,175 mm 89010211 M-BS227	Digout sub M40 x R45 PIN OD = 122 mm (4¾") 89012265 339-2122-66-020-10-P44,41 Inner tube M40 x R45 89010306 339-1048-66-018-01-R00,41 Circlip 89010210 M-CC081 Seal O-ring 57 x 3,175 mm 89010211 M-BS227 Digout sub M40 x R45 PIN OD = 132 mm (5³/₁₆") 89010305 339-2132-66-020-10-P44,41 Inner tube M40 x R45 89010306 339-1048-66-018-01-R00,41 Circlip 89010210 M-CC081 Seal O-ring 57 x 3,175 mm 89010211 M-BS227	COP RC45 Outside diameter OD = 120 mm Thread = R45 Length without drill bit = 803 mm Weight without drill bit = 41 kg 89011483 9704-RC-00-66B-91-000 RC 50 Outside diameter OD = 130 mm Thread = R45 Length without drill bit = 1152 mm Weight without drill bit = 72 kg 52292273 9705-RC-00-66B-97-000

*Saver sub connections depends on rig connection thread.

**Drill pipe connections depends on feed length on the rig.

Accessories	Product No.	Product code	Description	Thread
Blow down sub, M40	89001535	339-2102-39-017-01-S00,41	Blowdown sub, complete	M40
Preasure test sub, M40	89001551	9437	Sub pressure test	M40
Hoist plug, M40	89001555	339-2102-00-014-01-T00,41	Hoist plug	M40



Air swivel

Saver sub

Drill pipes

Digout sub

Hammer

M45 O-ring

(Drillpipes < 6 m)

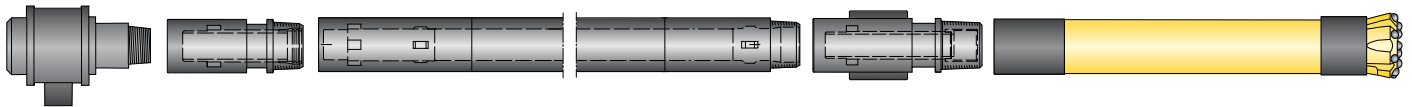
Legend	Saver sub*	Drill pipe**	Digout sub	Hammer
Description: OD, mm = Recommended hole size Thread: Length, (s/s) Weight: Prod. No: Product code:	Saver sub compl. M45 BOX x PIN 89001509 355-2114-55-030-01-C44,41 Inner tube M45 BOX x PIN 89001511 355-2060-55-030-01-R44,41 Circlip 89001525 M-CC085i Seal 89001526 M-AS658-228 OR Saver sub 4½" IF BOX x M45 PIN 89010299 341-2114-55-030-01-C00,41 Inner tube 4½" IF BOX x M45 PIN 89010300 341-1048-55-030-01-R00,41 Circlip 89001525 M-CC085i Seal 89001526 M-AS658-228	RC drill pipe, 3 m compl. M45 89001556 255-114-0300-R00-A0,40-08 Inner tube M45 89001557 255-114-0300-R00-A0,40-08 OR RC drill pipe, 4 m std compl. M45 89001558 255-060-0300-100-A0,27-06 Inner tube M45 89001559 255-060-0400-100-A0,27-06 OR RC drill pipe, 4 m compl. M45 D65RC 89001515 255-114-0400-R44-A0,40-08 Inner tube M45 89001516 255-060-0400-I44-A0,27-06 Circlip 89001525 M-CC085i Seal 89001526 M-AS658-228	Digout sub M45 x R45 4½" OD = 120 mm (4¾") 89012266 355-2114-66-018-10-P44,41 Inner tube M45 BOX x PIN 89001520 355-2060-66-018-01-R00,4 Circlip 89001525 M-CC085i Seal 89001526 M-AS658-228 Digout sub M45 x R45 OD = 132 mm (53/16") 89001519 355-2132-66-018-10-P44,41 Digout sub M45 x R45 OD = 138 mm (57/16") 89001529 355-2138-66-018-10-P44,41 Digout sub M45 x R45 OD = 141 mm (59/16") 89001530 355-2141-66-018-10-P44,41 Digout sub M45 x R45 OD = 144 mm (511/16") 89001531 355-2144-66-018-10-P44,42 Inner tube M45 89001520 355-2060-66-018-01-R00,41 Circlip 89001525 M-CC085i Seal 89001526 M-AS658-228	COP RC45 Outside diameter OD = 120 mm Thread = R45 Lenght without drill bit = 803 mm Weight without drill bit = 41 kg 89011483 9704-RC-00-66B-91-000 RC 50 Outside diameter OD = 130 mm Thread = R45 Lenght without drill bit = 1152 mm Weight without drill bit = 72 kg 52292273 9705-RC-00-66B-97-000

*Saver sub connections depends on rig connection thread.

**Drill pipe connections depends on feed length on the rig.

Inner tubes OF versions available on request

Accessories	Product No.	Product code	Description	Thread
Blow down sub, M45	89001513	355-2114-55-017-01-S00,41	Blowdown sub, complete	M45
Preassure test sub, M45	89001524	9435	Sub pressure test	M45
Hoist plug, M45	89001522	355-2114-00-014-01-T00,41	Hoist plug	M45



Air swivel

Saver sub

Drill pipes

Digout sub

Hammer

M45 O-ring

(Drill pipes ≥ 6 m)

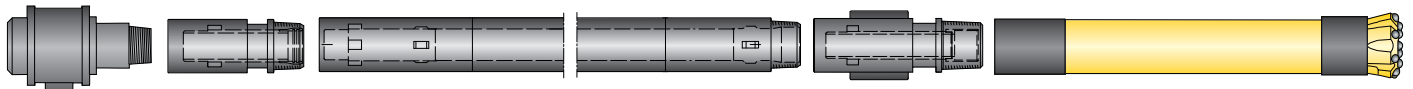
Legend	Saver sub*	Drill pipe**	Digout sub	Hammer
Description: OD, mm = Recommended hole size Thread: Length, (s/s) Weight: Prod. No: Product code:	Depends on rig connection thread Saver sub compl. M45 BOX x PIN 89001509 355-2114-55-030-01-C44,41 Inner tube M45 BOX x PIN 89001511 355-2060-55-030-01-R44,41 Circlip 89001525 M-CC085i Seal 89001526 M-AS658-228	Depends on feed length RC drill pipe, 6 m std compl. M45 89001560 255-114-0600-R00-A0,40-08 Inner tube M45 89001561 255-060-0600-100-A0,27-06 OR RC drill pipe, 6 m compl. M45, D65RC 89001517 255-114-0600-R44-A0,40-08 Inner tube M45 89001518 255-060-0600-144-A0,27-06 OR RC drill pipe, 9,14 m, DML compl. M45 89010365 255-114-0914-R45-L0,40-08 Inner tube M45 89010366 255-060-0914-145-L0,40-06 Circlip 89001525 M-CC085i Seal 89001526 M-AS658-228	Digout sub M45 x R45 4½" OD = 114 mm (4 ³¹ / ₆₄ ") 89012266 355-2114-66-018-10-P44,41 Inner tube M45 BOX x PIN 89001520 355-2060-66-018-01-R00,4 Circlip 89001525 M-CC085i Seal O-ring 89001526 M-AS658-228 Digout sub M45 x R45 OD = 132 mm (5 ³ / ₁₆ ") 89001519 355-2132-66-018-10-P44,41 Digout sub M45 x R45 OD = 138 mm (5 ⁷ / ₁₆ ") 89001529 355-2138-66-018-10-P44,41 Digout sub M45 x R45 OD = 141 mm (59/16") 89001530 355-2141-66-018-10-P44,41 Digout sub M45 x R45 OD = 144 mm (511/16") 89001531 355-2144-66-018-10-P44,42 Inner tube M45 89001520 355-2060-66-018-01-R00,41 Circlip 89001525 M-CC085i Seal 89001526 M-AS658-228	COP RC45 Outside diameter OD = 120 mm Thread = R45 Length without drill bit = 803 mm Weight without drill bit = 41 kg 89011483 9704-RC-00-66B-91-000 RC 50 Outside diameter OD = 130 mm Thread = R45 Length without drill bit = 1152 mm Weight without drill bit = 72 kg 52292273 9705-RC-00-66B-97-000

*Saver sub connections depends on rig connection thread.

**Drill pipe connections depends on feed length on the rig.

Inner tubes OF versions available on request

Accessories	Product No.	Product code	Description	Thread
Blow down sub, M45	89001513	355-2114-55-017-01-S00,41	Blowdown sub, complete	M45
Prepressure test sub, M45	89001524	9435	Sub pressure test	M45
Hoist plug, M45	89001522	355-2114-00-014-01-T00,41	Hoist plug	M45



Air swivel

Saver sub

Drill pipes

Digout sub

Hammer

M45 O-ring free with flats

(Drill pipes ≥ 6 m)

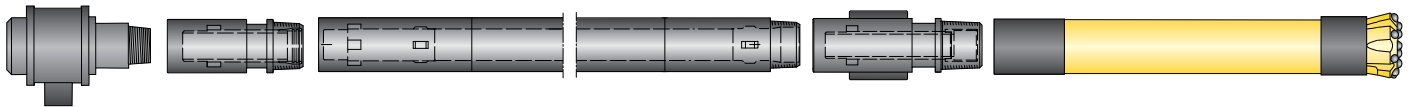
Legend	Saver sub*	Drill pipe**	Digout sub	Hammer
Description: OD, mm = Recommended hole size Thread: Length, (s/s) Weight: Prod. No.: Product code:	Depends on rig connection thread Saver sub compl. M45 BOX x PIN 89001509 355-2114-55-030-01-C44,41 Inner tube M45 BOX x PIN 89001511 355-2060-55-030-01-R44,41 Circlip 89001525 M-CC085i Seal 89001526 M-AS658-228	RC rill pipe, R45 OF 6 m compl. M45 OF, D65RC 89012457 255-114-0600-R44-R0,40-08 Inner tube pipe M45 OF 6 m M45 OF 89012458 255-060-0600-I44-R0,27-06 Circlip 89001525 M-CC085i Seal 889012460 0663-110014915	Digout sub M45 OF x R45 4½" OD = 122 mm (4.7") 89012480 355-2120-66-018-11-P44,41 Inner tube M45 OF BOX x PIN 89012482 3BS-2060-66-018-01-R00,41 Circlip 89001525 M-CC085i Seal 89012460 0663-110014915 Digout sub M45 OF x R45 4½" OD = 132 mm (53/16") 89012481 355-2132-66-018-11-P44,41 Inner tube M45 OF 89012482 3BS-2060-66-018-01-R00,41 Circlip 89001525 M-CC085i Seal 89012460 0663-110014915	COP RC45 Outside diameter OD = 120 mm Thread = R45 Lenght without drill bit = 803 mm Weight without drill bit = 41 kg 89011483 9704-RC-00-66B-91-000 RC 50 Outside diameter OD = 130 mm Thread = R45 Lenght without drill bit = 1152 mm Weight without drill bit = 72 kg 52292273 9705-RC-00-66B-97-000

*Saver sub connections depends on rig connection thread.

**Drill pipe connections depends on feed length on the rig.

Inner tubes OF versions available on request

Accessories	Product No.	Product code	Description	Thread
Blow down sub, M45	89001513	355-2114-55-017-01-S00,41	Blowdown sub, complete	M45
Preassure test sub, M45	89001524	9435	Sub pressure test	M45
Hoist plug, M45	89001522	355-2114-00-014-01-T00,41	Hoist plug	M45



Air swivel

Saver sub

Drill pipes

Digout sub

Hammer

R40 O-ring

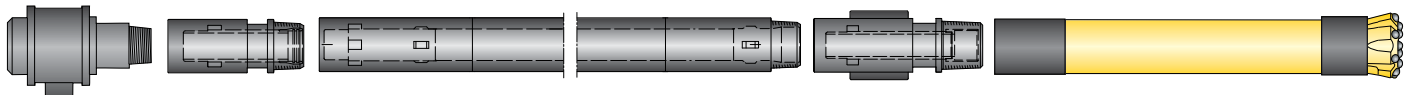
Legend	Saver sub	Drill pipe	Digout sub	Hammer
Description: OD, mm = Recommended hole size Thread: Length, (s/s) Weight: Prod. No: Product code:	Saver sub compl. M45 BOX x R40 PIN 89010315 355-2114-65-030-01-C44,41 Inner tube M45 BOX x R40 PIN 89010316 355-1048-65-030-01-R44,41 OR Saver sub compl. 4½" IF BOX x R40 PIN 89010313 341-2114-65-030-01-C44,41 Inner tube 89010314 341-1048-65-030-01-R44,41 Circlip 89010311 46-BO-00-800075 Seal 89010312 46-BO-02-800076	RC drill pipe, 3 m compl. R40 89010307 265-102-0300-R00-L0,40-06 Inner tube R40 89010308 265-048-0300-100-L0,40-06 OR RC drill pipe, 6 m, 89010309 265-102-0600-R00-L0,40-06 Inner tube R40 89010310 265-048-0600-100-L0,40-06 Circlip 89010311 46-BO-00-800075 Seal 89010312 46-BO-02-800076	Digout sub R40 x R45 PIN OD = 120 mm (4¾") 89012267 365-2122-66-020-10-P44,41 Inner tube R40 x R45 89010318 365-3048-66-018-01-R00,41 Circlip 89010311 46-BO-00-800075 Seal 89010312 46-BO-02-800076 Digout sub R40 x R45 PIN OD = 132 mm (5³/₁₆") 89010317 365-2132-66-020-10-P44, 41 Inner tube R40 x R45 89010318 365-3048-66-018-01-R0D, 41 Circlip 89010311 46-BO-00-800075 Seal 89010312 46-BO-02-800076	COP RC45 Outside diameter OD = 120 mm Thread = R45 Length without drill bit = 803 mm Weight without drill bit = 41 kg 89011483 9704-RC-00-66B-91-000 RC 50 Outside diameter OD = 130 mm Thread = R45 Length without drill bit = 1152 mm Weight without drill bit = 72 kg 52292273 9705-RC-00-66B-97-000

*Saver sub connections depends on rig connection thread.

**Drill pipe connections depends on feed length on the rig.

Inner tubes OF versions available on request

Accessories	Product No.	Product code	Description	Thread
Blow down sub, R40	89010320	365-2102-65-017-01-S00,41	Blowdown sub, complete	R40
Hoist plug, R40	On request	365-2102-65-017-01-S00,41	Hoist plug	R40



Air swivel

Saver sub

Drill pipes

Digout sub

Hammer

R45 O-ring

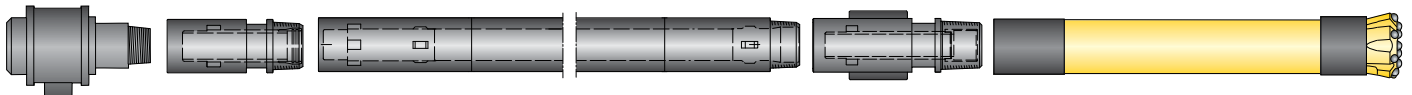
Legend	Saver sub	Drill pipe	Digout sub	Hammer
Description: OD, mm = Recommended hole size Thread: Length, (s/s) Weight: Prod. No.: Product code:	Saver sub compl. M45 BOX x R45 PIN 89010291 355-2114-66-030-01-C44,41 Inner tube M45 -> R45 89010292 355-1048-66-030-01-R44,41 OR Saver sub compl. 4½" IF BOX x R45 PIN, 89010289 341-2114-66-030-01-C44,41 Inner tube 4½" IF BOX -> R45 89010290 341-1048-66-030-01-R44,41 OR Saver sub compl. R45 BOX -> R45 PIN 89010372 366-2114-66-030-01-C44,41 Inner tube R45 ->R45 89010373 366-1048-66-030-01-R44,41 Circlip 89010371 M-CC0881 Seal 89010370 M-BS238	RC drill pipe, 3 m compl. R45 89010285 266-114-0300-R00-L0,40-05 Inner tube R45 89010286 266-060-0300-I00-L0,40-06 OR Drill pipe, 6 m R45, D65RC Please contact your local sales representative for product number. Inner tube R45 89010284 266-060-0600-I00-L0,40-06 OR RC drill pipe, 6 m compl. R45 89010279 266-114-0600-R00-L0,40-06 Inner tube R45 89010284 266-060-0600-I00-L0,40-06 Circlip 89010371 M-CC0881 Seal 89010370 M-BS238	Digout sub R45 BOX x R45 PIN OD = 120 mm (4¾") 89012268 366-2114-66-018-10-P44,41 Inner tube R45 BOX x R45 PIN 89010375 366-3048-66-018-01-R00,41 Circlip 89010371 M-CC0881 Seal 89010370 M-BS238 Digout sub R45 BOX x R45 PIN OD = 132 mm (53/16") 89010374 366-2132-66-018-10-P44,42 Inner tube R45 BOX -> R45 PIN 89010375 366-3048-66-018-01-R00,41 Circlip 89010371 M-CC0881 Seal 89010370 M-BS238	COP RC45 Outside diameter OD = 120 mm Thread = R45 Length without drill bit = 803 mm Weight without drill bit = 41 kg 89011483 9704-RC-00-66B-91-000 RC 50 Outside diameter OD = 130 mm Thread = R45 Length without drill bit = 1152 mm Weight without drill bit = 72 kg 52292273 9705-RC-00-66B-97-000

*Saver sub connections depends on rig connection thread.

**Drill pipe connections depends on feed length on the rig.

Inner tubes OF versions available on request

Accessories	Product No.	Product code	Description	Thread
Blow down sub, R45	89010376	366-2114-66-017-01-S00,41	Blowdown sub, complete	R45
Hoist plug, R45	On request	366-2114-66-017-01-S00,41	Hoist plug	R45



Air swivel

Saver sub

Drill pipes

Digout sub

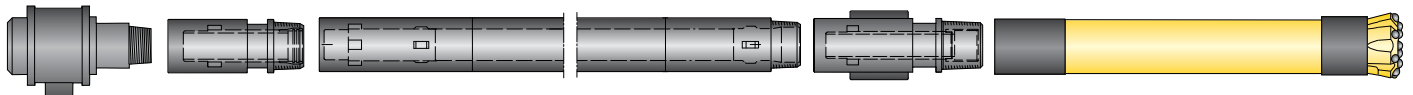
Hammer

ECR102 O-ring free

Legend	Saver sub*	Drill pipe**	Digout sub	Hammer
Description: OD, mm = recommended hole size Thread: Length, (s/s) Weight: Prod. No: Product code:	Saver sub compl. M45 BOX x ECR102OF PIN 89012595 355-2114-RY-030-11-C44,41 Inner tube M45 BOX x ECR102OF 89012596 355-1048-RY-030-11-R44,41 OR Saver sub compl. 4½" IF BOX x ECR1102OF PIN 89012599 341-2114-RY-030-11-C44,41 Inner tube 4½" IF BOX x ECR1102OF 89012600 341-1048-RY-030-11-R44,41 Seal Innertube seal 89012575 EPC-07-700066	RC drill pipe, 3 m compl. ECR1102OF 89012572 2RY-102-0300-R00-L0,40-08 Inner tube ECR1102OF 89012573 2RY-049-0300-I01-L0,40-06 OR RC drill pipe, 6 m compl. ECR1102OF 89012576 2RY-102-0600-R01-L0,40-08 Inner tube ECR1102OF 89012577 2RY-049-0600-I01-L0,40-06 Circlip SGH 77 89012574 EPC-07-700065 Seal Innertube seal 89012575 EPC-07-700066	Digout sub ECR1102OF BOX x R45 PIN OD = 120 mm (4¾") 89012590 2RY-2120-66-018-11-P44,41 Inner tube ECR1102OF BOX x R45 89012592 2RY-3044-66-020-01-R00,41 Circlip SGH 77 89012574 EPC-07-700065 Seal Innertube seal 89012575 EPC-07-700066 Digout sub ECR1102OF x R45 PIN OD = 132 mm (5³/₁₆") 89012591 2RY-2132-66-018-11-P44,41 Inner tube ECR1102OF BOX x R45 89012592 2RY-3044-66-020-01-R00,41 Circlip SGH 77 89012574 EPC-07-700065 Seal Innertube seal 89012575 EPC-07-700066	COP RC45 Outside diameter OD = 120 mm Thread = R45 Length without drill bit = 803 mm Weight without drill bit = 41 kg 89011483 9704-RC-00-66B-91-000 RC 50 Outside diameter OD = 130 mm Thread = R45 Length without drill bit = 1152 mm Weight without drill bit = 72 kg 52292273 9705-RC-00-66B-97-000

*Saver sub connections depends on rig connection thread.

**Drill pipe connections depends on feed length on the rig.



Air swivel

Saver sub

Drill pipes

Digout sub

Hammer

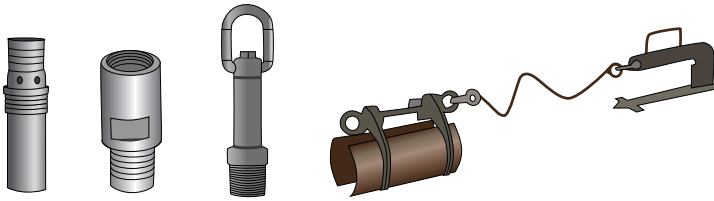
ECR115 O-ring free

Legend	Saver sub*	Drill pipe**	Digout sub	Hammer
Description: OD, mm = Recommended hole size Thread: Length, (s/s) Weight: Prod. No: Product code:	Saver sub compl. M45 BOX x ECR1115 PIN 89012593 355-2114-RX-030-11-C44,41 Inner tube 89012594 355-1054-RX-030-11-R44,41 OR Saver sub 4½" IF BOX x ECR1115OF PIN 89012597 341-2114-RX-030-11-C00,41 Inner tube 4½" IF BOX x ECR1115OF PIN 89012598 341-1054-RX-030-11-R44,41 Seal Innertube seal ECR1115OF 89012569 EPC-07-700064	Depends on feed length RC drill pipe, 3 m compl. ECR1115OF 89012566 2RX-114-0300-R01-L0,40-09 Inner tube ECR1115OF 89012567 2RX-050-0300-I01-L0,40-06 OR RC drill pipe, 6 m compl. ECR1115OF 89012570 2RX-114-0600-R01-L0,40-09 Inner tube ECR1115OF 89012571 2RX-050-0600-I01-L0,40-06 Circlip SGH92 89012568 EPC-07-700063 Seal Innertube seal ECR1115OF 89012569 EPC-07-700064	Digout sub compl. ECR1115OF BOX x R45 PIN OD = 120 mm (4¾") 89012587 2RX-2120-66-018-11-P44,41 Inner tube ECR1115OF BOX x R45 PIN 89012589 2RX-3055-66-018-11-R00,41 Circlip SGH92 89012568 EPC-07-700063 O-ring Seal ECR1115OF 89012569 EPC-07-700064 Digout sub compl. ECR1115OF BOX x R45 PIN OD = 132 mm (5 ³ / ₁₆ ") 89012588 2RX-2132-66-018-11-P44,41 Inner tube ECR1115OF BOX x 4½" Remet OF 89012592 2RY-3044-66-020-01-R00,41 Circlip SGH92 89012568 EPC-07-700063 O-ring Seal ECR1115OF 89012569 EPC-07-700064	COP RC45 Outside diameter OD = 120 mm Thread = R45 Length without drill bit = 803 mm Weight without drill bit = 41 kg 89011483 9704-RC-00-66B-91-000 RC 50 Outside diameter OD = 130 mm Thread = R45 Length without drill bit = 1152 mm Weight without drill bit = 72 kg 52292273 9705-RC-00-66B-97-000

*Saver sub connections depends on rig connection thread.

**Drill pipe connections depends on feed length on the rig.

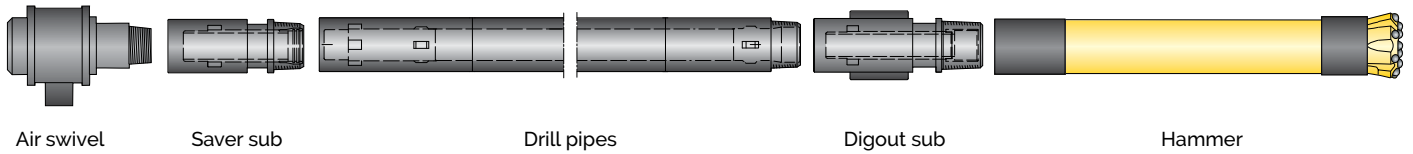
Accessories	Product No.	Product code	Description	Thread
Blow down sub, DR115	89001406	362-2114-62-017-01-S00,41	Blowdown sub, complete	DR115
Hoist plug, DR115	89001416	362-2114-00-014-01-T00,41	Hoist plug	DR115



Accessories

Accessories	Product No.	Product code	Description	Thread
DR102				
Blow down sub, DR102	89001451	360-2102-60-017-01-S00,41	Blowdown sub, complete	DR102
Hoist plug, DR102	On request	On request	Hoist plug	DR102
DR115				
Blow down sub, DR115	89001406	362-2114-62-017-01-S00,41	Blowdown sub, complete	DR115
Hoist plug, DR115	89001416	362-2114-00-014-01-T00,41	Hoist plug	DR115
M40				
Blow down sub, M40	89001535	339-2102-39-017-01-S00,41	Blowdown sub, complete	M40
Preassure test sub, M40	89001551	9437	Sub pressure test	M40
Hoist plug, M40	89001555	339-2102-00-014-01-T00,41	Hoist plug	M40
M45				
Blow down sub, M45	89001513	355-2114-55-017-01-S00,41	Blowdown sub, complete	M45
Preassure test sub, M45	89001524	9435	Sub pressure test	M45
Hoist plug, M45	89001522	355-2114-00-014-01-T00,41	Hoist plug	M45
R40				
Blow down sub, R40	89010320	365-2102-65-017-01-S00,41	Blowdown sub, complete	R40
Hoist plug, R40	On request	365-2102-65-017-01-S00,41	Hoist plug	R40
R45				
Blow down sub, R45	89010376	366-2114-66-017-01-S00,41	Blowdown sub, complete	R45
Hoist plug, R45	On request	366-2114-66-017-01-S00,41	Hoist plug	R45
Lifting-slings				
Lifting-Sling	89001458	9446	Lifting-Sling, 3 m, 4"	
Lifting-Sling	89001459	9447	Lifting-Sling, 6 m, 4"	
Lifting-Sling	89001436	9457	Lifting-Sling, 3 m, 4½"	
Lifting-Sling	89001427	9456	Lifting-Sling, 6 m, 4½"	





Technical data

COP RC45

Dimensions and weights	
Product No.	89011483
Product code	9704-RC-00-66B-91-000
Outside diameter, mm (in)	120 (4.72)
Length without drill bit, mm (in)	803 (31.6)
Weight without bit, kg (lbs)	41 (90.4)
Piston weight, kg (lbs)	10.4 (22.9)
Minimum bit size, mm (in)	125 (4.92)
Maximum bit size, mm (in)	140 (5.51)

Drilling parameters	
Air Consumption @ 25 bar (362 psi), L/s (cfm)	335 (710)
Air Consumption @ 35 bar (507 psi), L/s (cfm)	534 (1131)
Recommended working pressure, bar (psi)	30–35 (430–510)
Rotation speed, rpm	50–140
Recommended bit size, mm (in)	127–136 (5.00–5.35)
Top sub thread	Remet 4½" BOX
Wrench flat top sub, mm (in)	102 (4.00)
Bit shank	RC 45

COP RC45 HD

Dimensions and weights	
Product No.	89012468
Product code	9704-RC-00-66B-91-H00
Outside diameter, mm (in)	125 (4.92)
Length without drill bit, mm (in)	803 (31.6)
Weight without bit, kg (lbs)	48 (105.8)
Piston weight, kg (lbs)	10,4 (22.9)
Minimum bit size, mm (in)	130 (5.12)
Maximum bit size, mm (in)	140 (5.51)

Drilling parameters	
Air Consumption @ 25 bar (362 psi), L/s (cfm)	335 (710)
Air Consumption @ 35 bar (507 psi), L/s (cfm)	534 (1131)
Recommended working pressure, bar (psi)	30–35 (430–510)
Rotation speed, rpm	50–140
Recommended bit size, mm (in)	133–136 (5.24–5.35)
Top sub thread	Remet 4½" BOX
Wrench flat top sub, mm (in)	102 (4.00)
Bit shank	RC 45

RC 50

Dimensions and weights	
Product No.	52292273
Product code	9705-RC-00-66B-97-000
Outside diameter, mm (in)	130 (5.12)
Length without drill bit, mm (in)	1152 (45.3)
Weight without drill bit, kg (lbs)	72 (158.7)
Piston weight, kg (lbs)	17 (37.5)
Minimum bit size, mm (in)	136 (5.35)
Maximum bit size, mm (in)	165 (6.50)

Drilling parameters	
Air Consumption @ 25 bar (362 psi), L/s (cfm)	365 (773)
Air Consumption @ 35 bar (507 psi), L/s (cfm)	500 (1059)
Recommended working pressure, bar (psi)	30–35 (430–510)
Rotation speed, rpm	20–70
Recommended bit size, mm (in)	140–146 (5.51–5.75)
Top sub thread	Remet 4½" BOX
Wrench flat on top sub, mm (in)	102 (4.00)
Bit shank	RC 50

Accessories and consumables for grinding machines

Diamond grinding wheels for button bits

For Grind Matic RH3

Spherical buttons

Diameter, mm	Product No.
11	87004851
12	87005050
12,7	87004852
13	87004848
14,5	87004853
15,8	87004854
19,1	na



Trubbnos buttons

Diameter, mm	Product No.
14,5	87004814
15,8	87004815
19,1	87004816



Ballistic buttons

Diameter, mm	Product No.
11	87004855
12	87005051
12,7	87004856
13	87004849
14,5	87004857
15,8	87004858
19,1	na



Diamond grinding wheels for button bits

For all Grind Matic BQ and Manual B

Spherical buttons

Diameter, mm	Product No.
11	87003971
12	87003972
13	87003973
14	87001025
15	87001384
16	87001027
18	87003964
19	87003966



Trubbnos buttons

Diameter, mm	Product No.
14,5	87004594
15,8	87004595
19,1	87004596



Ballistic buttons

Diameter, mm	Product No.
11	87003976
12	87003977
13	87003413
14	87003414
15	87003415
16	87003416
18	87003965
19	87003967



Diamond grinding cups for button bits

For Grind Matic HG

Spherical buttons

Diameter, mm	Product No.
11	87005114
12	87005115
13	87005116
14	87005117
15	87005118
16	87005119
18	87005120
19	87005121
20	87005122
22	87005123
25	87005124
19,1	na



Trubbnos buttons

Diameter, mm	Product No.
14,5	87005165
15,8	87005166
19,1	87005167



Steel removal

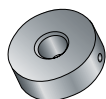
Diameter, mm	Product No.
11 – 12	87005152
13 – 14	87005153
15 – 16	87005154
17 – 18	87005155
19 – 20	87005156
21 – 22	87005157
19,1	na



Bit holders for button bits

For Grind Matic BQ2-DTH, BQ3-DTH and Manual B-DTH.

Type of bit	Product No.
COP RC45	87004605
RC 50	87004605
Locking bar	87002361



Grinding templates – Integral rods and bits

For button bits.

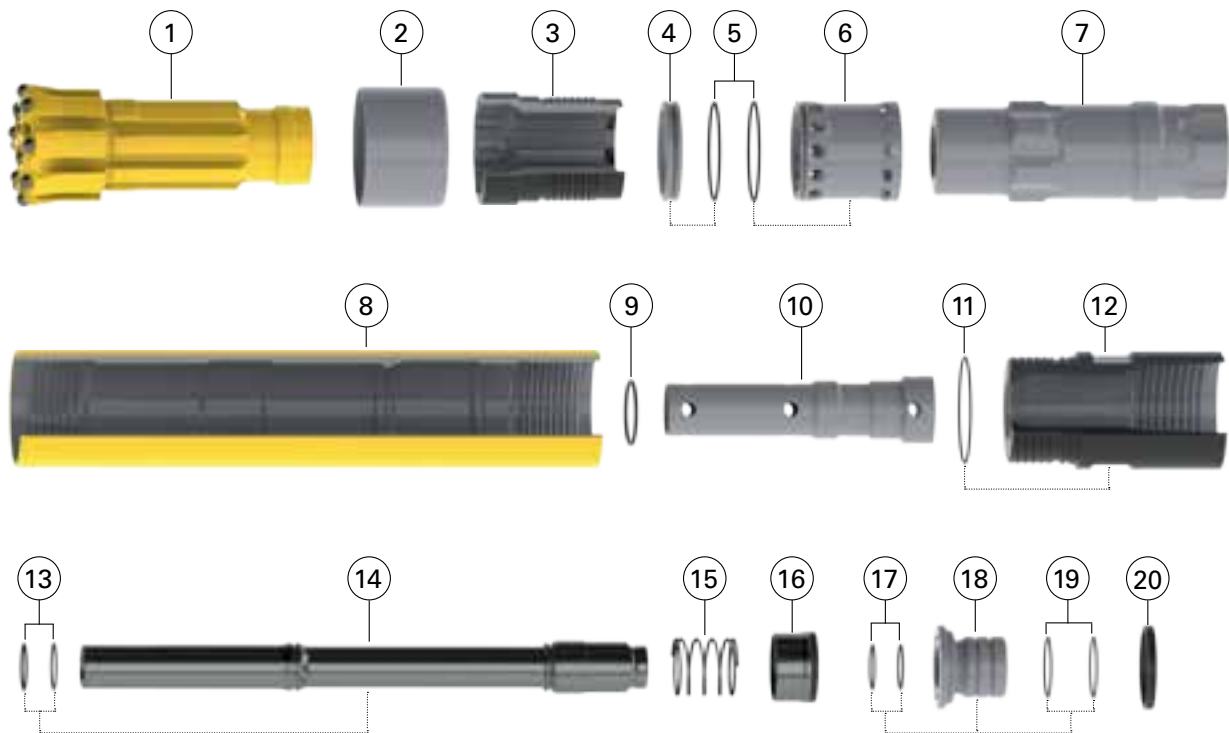
Grinding template	Dimension	Product No.
7 – 14,5 Spherical	7 – 14,5 mm	87005282
7 – 14,5 Ballistic	7 – 14,5mm	87005283
11-22 Spherical	11-22 mm	90510753
11-19 Ballistic	11-19 mm	87005285
6-12 Trubbnos	6-12 mm	87005287
12,7-19,1 Trubbnos	12,7-19,1 mm	87005288



More information about grinding consumables can be found in our product catalogue for grinding equipment. Just contact your local Epiroc representative and they will help you.

Secoroc COP RC45

Reverse Circulation DTH-hammer – Standard



Ref.	Part	Prod. No.	Product code
Standard bits and sleeves			
1	Bits, concave BH30 carbide		
	125 mm bit	90029255	100-5125-91-0418.10-20
	127 mm bit	90029256	100-5127-91-0418.10-20
	130 mm bit	90029257	100-5130-91-0418.10-20
	133 mm bit	90029258	100-5133-91-0417.10-20
	136 mm bit	90029259	100-5136-91-0417.10-20
	140 mm bit	90029260	100-5140-91-0412.10-20
1	Bits, concave BH30P carbide, trubbnos		
	125 mm bit	90029886	100-5125-91-0498.10-20
	127 mm bit	90029774	100-5127-91-0498.10-20
	130 mm bit	90029887	100-5130-91-0498.10-20
	133 mm bit	90029772	100-5133-91-0491.10-20
	136 mm bit	90029888	100-5136-91-0491.10-20
	140 mm bit	90029773	100-5133-91-0491.10-20
1	Bits, concave BH66 carbide		
	125 mm bit	90029608	100-5125-91-0418.10-12
	127 mm bit	90029609	100-5127-91-0418.10-12
	130 mm bit	90029610	100-5130-91-0418.10-12
	133 mm bit	90029611	100-5133-91-0417.10-12
	136 mm bit	90029612	100-5136-91-0417.10-12
	140 mm bit	90029613	100-5140-91-0412.10-12
2	Sleeves, standard		
	124 mm	89011487	9704-RC-00-000-00-000-C24
	126 mm	89011488	9704-RC-00-000-00-000-C26
	129 mm	89011489	9704-RC-00-000-00-000-C29
	132 mm	89011490	9704-RC-00-000-00-000-C32
	135 mm	89011491	9704-RC-00-000-00-000-C35
	137 mm	89011492	9704-RC-00-000-00-000-C37
	139 mm	89011493	9704-RC-00-000-00-000-C39
	164 mm	89012503	9704-RC-00-000-00-000-C64
3	Chuck	89012487	9704-RC-00-000-91-000-001
4, 5	Bit retaining ring assembly	89011485	9704-RC-00-000-91-000-A02
4	Bit retaining ring	-	-
5	O-ring (91.67*3.53)	86008885	0663-2116-87

Ref.	Part	Prod. No.	Product code
5, 6	Bit bearing assembly	89011484	9704-RC-00-000-91-000-A22
5	O-ring (91.67*3.53)	86008885	0663-2116-87
6	Bit bearing	-	-
7	Piston	89011497	9704-RC-00-000-91-000-005
8	Casing	89011482	9704-RC-00-000-00-000-004
9	Bumper ring (56.52*5.33)	86008883	0663-2116-17
10	Control tube	89011498	9704-RC-00-000-00-000-007
11, 12	Backhead assembly	89012364	9704-RC-00-66B-00-000-A20
11	O-ring (101.19*3.53)	95086641	0663-9233-00
12	Backhead	-	-
13, 14	Inner tube assembly	89011499	9704-RC-00-000-91-000-R95
13	O-ring (43*3)	86008882	0663-2120-04
14	Inner tube	-	-
15	Check valve spring	89011504	9704-RC-00-000-00-000-016
16	Check valve body	89011503	9704-RC-00-000-00-000-A17
17, 18, 19	Inner tube adapter assembly	89012365	9704-RC-00-66B-00-000-R94
17	O-ring (43*3)	86008882	0663-2120-04
18	Inner tube adapter	-	-
19	O-ring (57*3)	86008884	0663-2113-30
20	Crush ring	89012367	9704-RC-00-000-00-000-014

Complete hammer and maintenance kits	Prod. No.	Product code
COP RC45 complete hammer	89011483	9704-RC-00-66B-91-000
COP RC45 seal kit – included 5, 9, 11, 13, 17, 19, 20	89012400	9704-RC-00-66B-91-000-K30
COP RC45 check valve kit – included 15, 16	89011569	9704-RC-00-000-00-000-K17
COP RC45 rebuild kit – included 3, 8, 12, check valve kit, seal kit	89012401	9704-RC-00-66B-91-000-K40

Secoroc COP RC45 HD

Reverse Circulation DTH-hammer – Heavy Duty



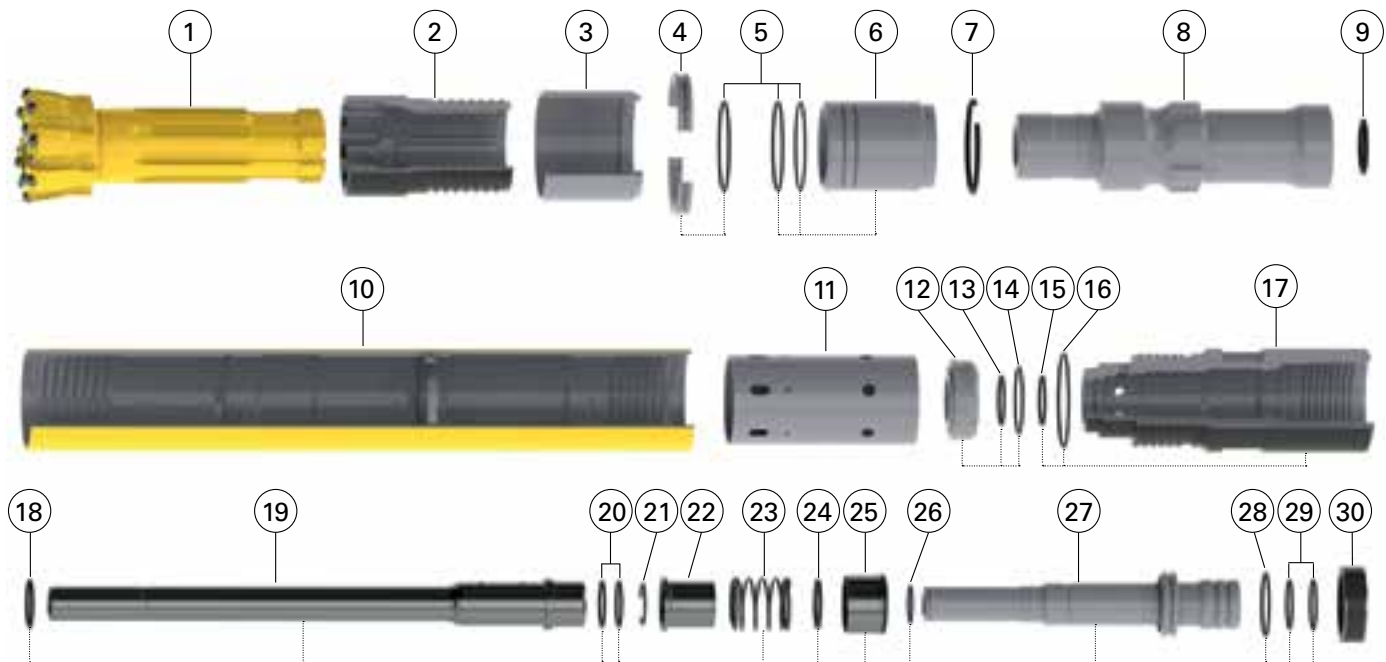
Ref.	Part	Prod. No.	Product code
Standard bits and sleeves			
1	Bits, concave BH30 carbide		
	130 mm bit	90029257	100-5130-91-0418.10-20
	133 mm bit	90029258	100-5133-91-0417.10-20
	136 mm bit	90029259	100-5136-91-0417.10-20
	140 mm bit	90029260	100-5140-91-0412.10-20
1	Bits, concave BH30P carbide, trubbnos		
	130 mm bit	90029887	100-5130-91-0498.10-20
	133 mm bit	90029772	100-5133-91-0491.10-20
	136 mm bit	90029888	100-5136-91-0491.10-20
	140 mm bit	90029773	100-5133-91-0491.10-20
	143 mm bit	90029900	100-5143-91-0492.10-20
	146 mm bit	90029901	100-5146-91-0492.10-20
	165 mm bit	90029861	100-5165-91-0412.10-20
	1	Bits, concave BH66 carbide	
130 mm bit		90029610	100-5130-91-0418.10-12
133 mm bit		90029611	100-5133-91-0417.10-12
136 mm bit		90029612	100-5136-91-0417.10-12
140 mm bit		90029613	100-5140-91-0412.10-12
2	Sleeves, Heavy Duty		
	126 mm	89012513	9704-RC-00-000-00-H00-C26
	129 mm	89012463	9704-RC-00-000-00-H00-C29
	132 mm	89012464	9704-RC-00-000-00-H00-C32
	135 mm	89012465	9704-RC-00-000-00-H00-C35
	137 mm	89012466	9704-RC-00-000-00-H00-C37
	139 mm	89012467	9704-RC-00-000-00-H00-C39
	142 mm	89012514	9704-RC-00-000-00-H00-C42
144 mm	89012515	9704-RC-00-000-00-H00-C44	
164 mm	89012503	9704-RC-00-000-00-000-C64	
3	Chuck	89012487	9704-RC-00-000-91-000-001
4, 5	Bit retaining ring assembly	89011485	9704-RC-00-000-91-000-A02
4	Bit retaining ring	-	-
5	O-ring (91.67*3.53)	86008885	0663-2116-87
5, 6	Bit bearing assembly	89011484	9704-RC-00-000-91-000-A22
5	O-ring (91.67*3.53)	86008885	0663-2116-87
6	Bit bearing	-	-

Ref.	Part	Prod. No.	Product code
7	Piston	89011497	9704-RC-00-000-91-000-005
8	Casing	89012461	9704-RC-00-000-00-H00-004
9	Bumper ring (56.52*5.33)	86008883	0663-2116-17
10	Control tube	89011498	9704-RC-00-000-00-000-007
11, 12	Backhead assembly	89012462	9704-RC-00-66B-00-H00-A20
11	O-ring (101, 19*3.53)	95086641	0663-9233-00
12	Backhead	-	-
13, 14	Inner tube assembly	89011499	9704-RC-00-000-91-000-R95
13	O-ring (43*3)	86008892	0663-2120-04
14	Inner tube	-	-
15	Check valve spring	89011504	9704-RC-00-000-00-000-016
16	Check valve body	89011503	9704-RC-00-000-00-000-A17
17, 18, 19	Inner tube adapter assembly	89012365	9704-RC-00-66B-00-000-R94
17	O-ring (43*3)	86008882	0663-2120-04
18	Inner tube adapter	-	-
19	O-ring (57*3)	86008884	0663-2113-30
20	Crush ring	89012367	9704-RC-00-000-00-000-014

Complete hammer and maintenance kits	Prod. No.	Product code
COP RC45 HD complete hammer	89012468	9704-RC-00-66B-91-H00
COP RC45 seal kit – included 5, 9, 11, 13, 17, 19, 20	89012400	9704-RC-00-66B-91-000-K30
COP RC45 check valve kit – included 15, 16	89011569	9704-RC-00-000-00-000-K17
COP RC45 HD rebuild kit – included 3, 8, 12, check valve kit, seal kit	89012469	9704-RC-00-66B-91-H00-K40

Secoroc RC 50

Reverse Circulation DTH-hammer



Ref.	Part	Prod. No.	Product code
1	Bit concave extra flushing 136 mm bit 140 mm bit 140 mm bit 143 mm bit, 19 mm gauge buttons 143 mm bit 146 mm bit 152 mm bit 165 mm bit	90516434 90516432 90029025 90003638 90516472 90516433 90516558 90516435	1E0-5136-97-7217.08-20 1E0-5140-97-7217.08-20 1E0-5140-97-7217.10-20 1E0-5143-97-7215.08-20 1E0-5143-97-7217.08-20 1E0-5146-97-7217.08-20 1E0-5152-97-7217.08-20 1E0-5165-97-7217.08-20
2	Chuck	52291887	9705-RC-00-000-97-000-001
3	Chuck sleeve 132 mm 134 mm 137 mm 139 mm 140 mm 142 mm 144 mm 147 mm 150 mm 153 mm 157 mm 163 mm	89001500 52291606 52291614 89001501 52348257 89001502 52291622 52348612 52348620 52352374 52352382 52343696	9705-RC-00-000-00-000-C32 9705-RC-00-000-00-000-C34 9705-RC-00-000-00-000-C37 9705-RC-00-000-00-000-C39 9705-RC-00-000-00-000-C40 9705-RC-00-000-00-000-C42 9705-RC-00-000-00-000-C44 9705-RC-00-000-00-000-C47 9705-RC-00-000-00-000-C50 9705-RC-00-000-00-000-C53 9705-RC-00-000-00-000-C57 9705-RC-00-000-00-000-C63
4, 5	Bit retaining ring assembly	52292331	9705-RC-00-000-97-000-002
4	Bit retaining ring (not sold separately)	-	-
5	O-ring	95086641	0663-95086641
5, 6	Bit bearing assembly	52291853	9705-RC-00-000-97-000-022
5	O-ring	95086641	0663-95086641
6	Bit bearing (not sold separately)	-	-
7	Bit bearing lock ring	52346780	9705-RC-00-000-00-000-058
8	Piston	52292018	9705-RC-00-000-97-000-005
9	Piston tail seal	52292067	9705-RC-00-000-00-000-054
10	Casing assembly	89010578	9705-RC-00-000-00-000-A04
11	Inner cylinder	52291630	9705-RC-00-000-00-000-048

Ref.	Part	Prod. No.	Product code
12, 13, 14	QL-valve assembly	52344074	9705-RC-00-000-00-000-A44
12	Valve body	-	-
13	O-ring	95137394	0663-95137394
14	O-ring	95716833	0663-95716833
15, 16, 17	Backhead assembly	52347648	9705-RC-00-66B-00-000-A20
15	O-ring	95018701	0663-95018701
16	O-ring	95086666	0663-95086666
17	Backhead	-	-
18, 19, 20	Lower inner-tube assembly	52344066	9705-RC-00-000-97-000-R95
18	Bumper ring	95136669	0663-95136669
19	Center tube	-	-
20	O-ring	95086195	0663-95086195
21	Check valve retaining ring	52346632	9705-RC-00-000-00-000-028
22	Check valve seat	52346616	9705-RC-00-000-00-000-018
23, 24, 25	Check valve assembly	52348638	9705-RC-00-000-00-000-A17
23	Spring	52346624	9705-RC-00-000-00-000-016
24	Polypack seal	-	-
25	Check valve body	52346715	9705-RC-00-000-00-000-036
26, 27, 28, 29	Upper Inner-tube assembly	52348182	9705-RC-00-66B-00-000-R94
26	O-ring bottom	95086153	0663-95086153
27	Adapter tube	-	-
28	O-ring middle	95086591	0663-95086591
29	O-ring top	95018453	0663-95018453
30	Crush ring	52341898	9705-RC-00-000-00-000-014

Complete hammer and maintenance kits	Prod. No.	Product code
RC50 Complete hammer	52292273	9705-RC-00-66B-97-000
Seal kit - Includes: 5, 9, 16, 17, 21, 27, 29, 30	52345147	0663-52345147
Service kit - Includes: QL-valve assembly (12, 13, 14), Check valve assembly (23, 24, 25) and Seal kit	52348653	9705-RC-00-000-00-000-K70
Rebuild kit - Includes: 2, 10, Backhead assembly (15, 16, 17) and service kit	52351426	9705-RC-00-66B-97-000-K40



9866 0221 01a Subjected to alterations without prior notice. © Epiroc Drilling Tools AB. All rights reserved. 2019.03.

United in performance. Inspired by innovation.

Performance unites us, innovation inspires us, and commitment drives us to keep moving forward. Count on Epiroc to deliver the solutions you need to succeed today and the technology to lead tomorrow.
epiroc.com



Epiroc Drilling Tools AB
Box 521, SE-737 25 Fagersta, Sweden
Phone: +46 223 461 00