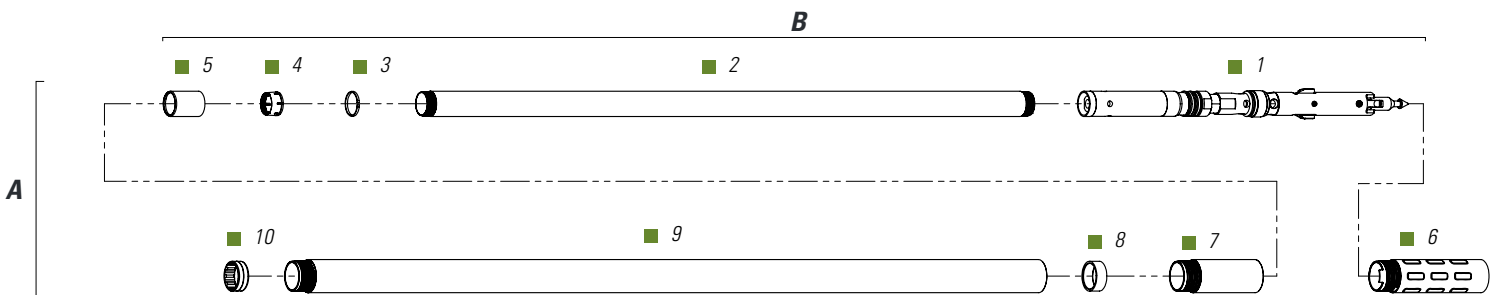


OWL V-LATCH SURFACE CORE BARREL | BTW - NTW - HTW

ASSY.	DESCRIPTION	PART NUMBER		
		BTW	NTW	HTW
A	Core Barrel assy 10 ft (3 m) OWL V-Latch	10S-B13-002VL	10S-N13-002NSVL	10S-H13-002VL
A	Core Barrel assy 5 ft (1.5 m) OWL V-Latch	10S-B13-001VL	10S-N13-001NSVL	10S-H13-001VL
B	Inner tube assy 10 ft (3 m)	10S-B13-004VL	10S-N13-004VL	10S-H13-004VL
B	Inner tube assy 5ft (1.5m)	10S-B13-003VL	10S-N13-003VL	10S-H13-003VL

POSITION	DESCRIPTION	PART NUMBER		
		BTW	NTW	HTW
1	Head assy OWL V-Latch	10S-B13-005VL	10S-N13-005VL	10S-H13-005VL
2	Inner tube 10 ft (3m)	10S-B13-033	10S-N13-033	10S-H13-033
2	OPTION Inner tube 10 ft (3m) chrome-plated	10S-B13-033CP	10S-N13-033CP	10S-H13-033CP
2	Inner tube 5 ft (1.5m)	10S-B13-032	10S-N13-032	10S-H13-032
2	OPTION Inner tube 5 ft (1.5m) chrome-plated	10S-B13-032CP	10S-N13-032CP	10S-H13-032CP
3	Core lifter slotted	10S-B13-35S	10S-N13-035S	10S-H13-35S
3	OPTION Core lifter broached	10S-B13-35B	10S-N13-035B	10S-H13-35B
3	OPTION Core lifter slotted diamond coated	10S-B13-35SDC	10S-N13-35SDC	10S-H13-35SDC
3	OPTION Core lifter broached diamond coated	10S-B13-35BDC	10S-N13-35BDC	10S-H13-35BDC
3	OPTION Core lifter basket type	10S-B13-35BT	10S-N13-35BT	10S-H13-35BT
4	Core lifter case	10S-B13-036	10S-N13-036	10S-H13-036
5	Standard locking coupling	10S-B13-037	10S-N13-37NS	10S-H13-037DK
5	OPTION Diamond locking coupling	L-BT1-WR-1B-EP	L-NT1-WR-1B-EP	L-HT1-WR-1B-EP
5	OPTION Carbide inserts locking coupling	L-BT1-CB-1B-EP	L-NT1-CB-1B-EP	L-HT1-CB-1B-EP
5	OPTION Full-hole locking coupling	10S-B13-037H	10S-N13-37NS	10S-H13-037H*
6	Standard adaptor coupling	10S-B13-038	10S-N13-038NS	10S-H13-038
6	OPTION Diamond adaptor coupling	A-BT61-WR-1B-EP	A-NT61-WR-1B-EP	A-HT61-WR-1B-EP
7	Landing ring	10S-B13-039	N/A	N/A
8	Outer tube 10 ft (3m)	10S-B13-041	10S-N13-041NS	10S-H13-041B
8	OPTION Outer tube 10 ft (3m) chrome-plated	10S-B13-041CP	10S-N13-041CP	10S-H13-041CP
8	OPTION Outer tube 10 ft (3m) full-hole	10S-B13-041H	10S-N13-041H	10S-H13-041H
8	OPTION Outer tube 10 ft (3m) chrome-plated full-hole	10S-B13-041HCP	10S-N13-041HCP	10S-H13-041HCP
8	Outer tube 5 ft (1.5m)	10S-B13-040	10S-N13-040NS	10S-H13-040
8	OPTION Outer tube 5 ft (1.5m) chrome-plated	10S-B13-040CP	10S-N13-040CP	10S-H13-040CP
8	OPTION Outer tube 5 ft (1.5m) full-hole	10S-B13-040H	10S-N13-040H	10S-H13-040H
8	OPTION Outer tube 5 ft (1.5m) chrome-plated full-hole	10S-B13-040HCP	10S-N13-040HCP	10S-H13-040HCP
9	Inner tube stabilizer	10S-B13-042	10S-N13-42NS	10S-H13-042



* Full-hole locking coupling is standard with this size.

Other options are available, including extensions and protectors. Contact your Fordia representative for more details.