

OWL STANDARD SURFACE HEAD ASSEMBLY | **NWL2**

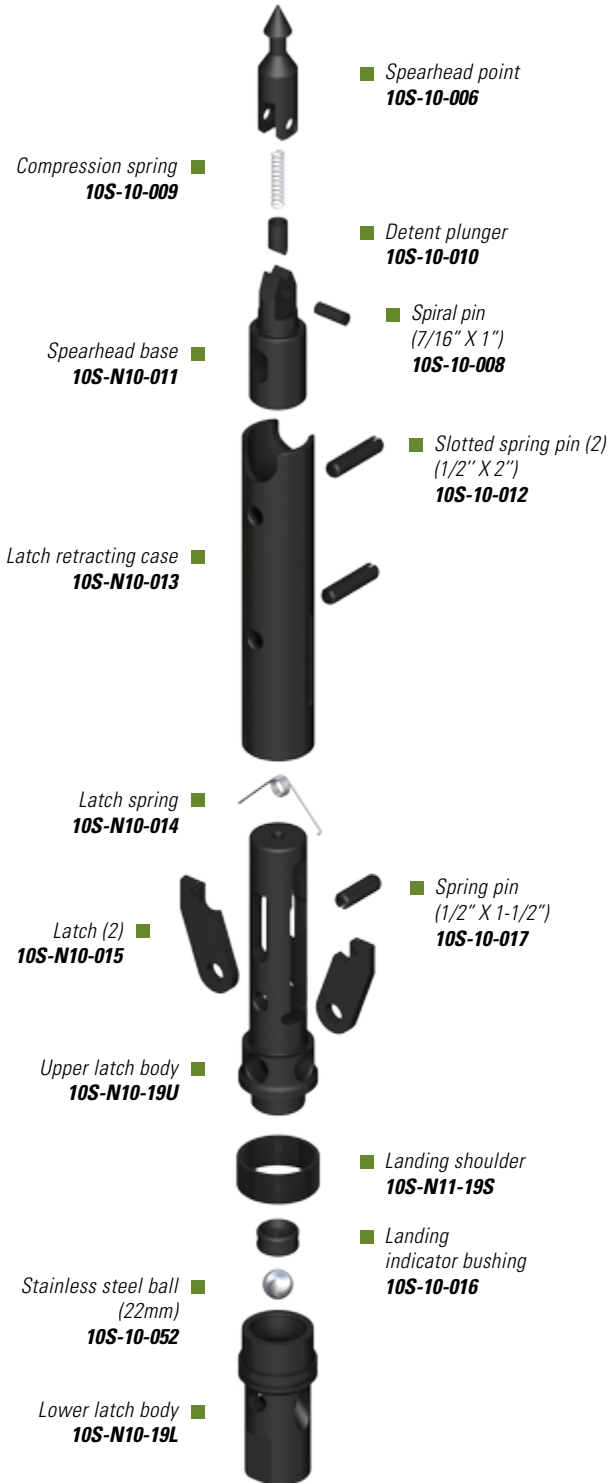
ASSY.	DESCRIPTION	PART NUMBER	WEIGHT	
			lb	kg
A	Head assy NWL/2 OWL	10S-N11-005	25.79	11.70
B	Inner tube cap assy NWL2/2U OWL	10S-N11-031	3.44	1.56



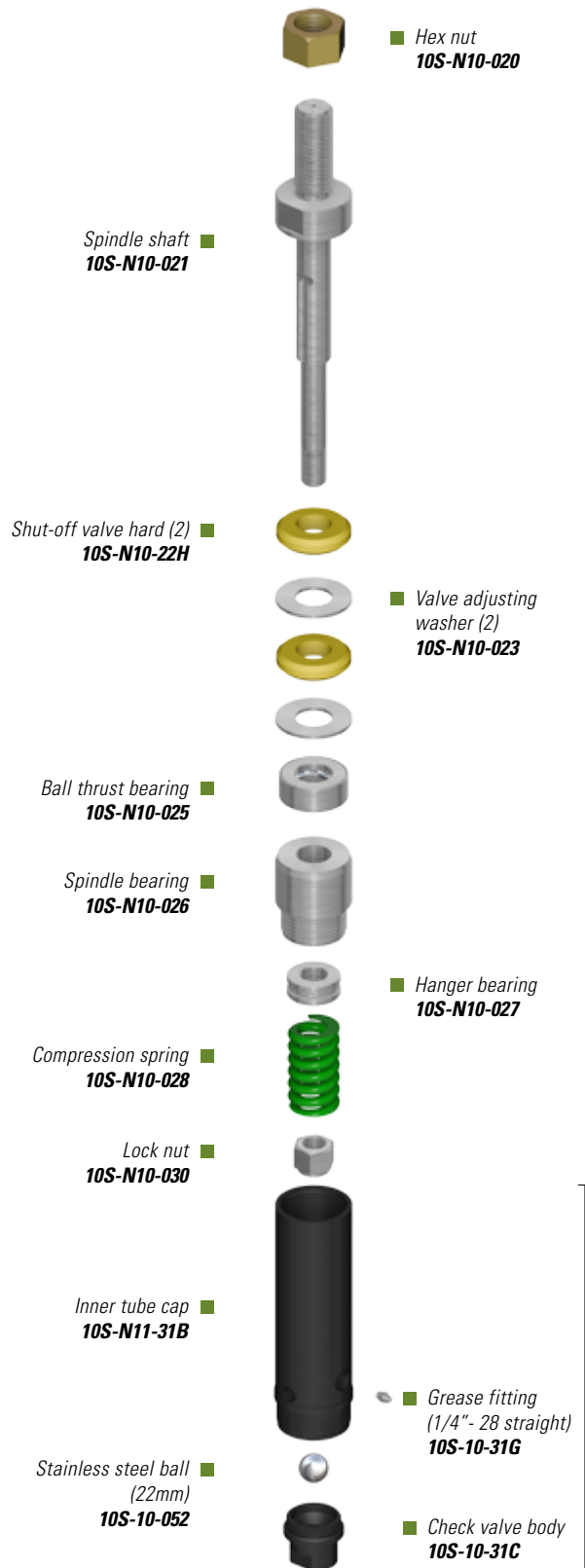
	DESCRIPTION	PART NUMBER	
A	Spearhead point	10S-10-006	
	Compression spring	10S-10-009	
	Detent plunger	10S-10-010	
	Spiral pin 7/16" X 1"	10S-10-008	
	Spearhead base	10S-N10-011	
	Slotted spring pin 1/2" X 2" (2)	10S-10-012	
	Latch retracting case	10S-N10-013	
	Latch spring	10S-N10-014	
	Latch (2)	10S-N10-015	
	Spring pin 1/2" X 1-1/2"	10S-10-017	
	Upper latch body	10S-N10-19U	
	Landing shoulder	10S-N11-19S	
	Stainless steel ball 22mm	10S-10-052	
	Landing indicator bushing	10S-10-016	
	Lower latch body	10S-N10-19L	
	Hex nut	10S-N10-020	
	Spindle shaft	10S-N10-021	
	1 Shut-off valve hard (2)	10S-N10-22H	
	Valve adjusting washer (2)	10S-N10-023	
	Ball thrust bearing	10S-N10-025	
	Spindle bearing	10S-N10-026	
	Hanger bearing	10S-N10-027	
	Compression spring	10S-N10-028	
	Lock nut	10S-N10-030	
	B	Inner tube cap	10S-N11-31B
		Grease fitting 1/4" - 28 straight	10S-10-31G
		Stainless steel ball 22mm	10S-10-052
		Check valve body	10S-10-31C

1 Optional shut-off valves (soft) are also available. Please use the following part number 10S-N10-22S to place an order.

**OWL STANDARD SURFACE | NWL2 PARTS**



**A**



**B**