

OWL L-LATCH SURFACE HEAD ASSEMBLY | HWL

ASSY	DESCRIPTION	PART NUMBER	WEIGHT	
			lb	kg
A	Head assy HWL L-Latch	10S-H10-005LL	42.55	19.30
B	L-Latch conversion kit	10S-H10-006LL	22.70	10.30
C	Inner tube cap assy	10S-H10-031	4.40	2.62

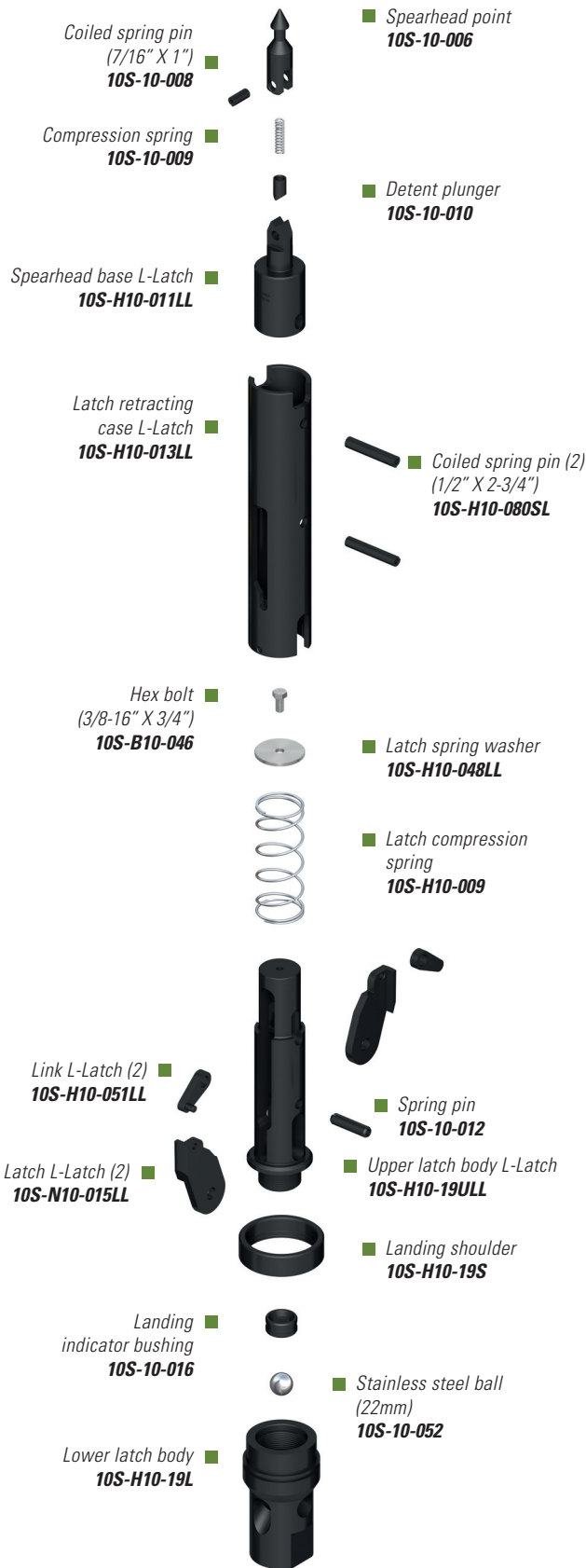
DESCRIPTION	PART NUMBER
Spearhead point	10S-10-006
Coiled spring pin 7/16" X 1"	10S-10-008
Compression spring	10S-10-009
Detent plunger	10S-10-010
Spearhead base L-Latch	10S-H10-011LL
Latch retracting case L-Latch	10S-H10-013LL
Coiled spring pin 1/2" X 2-3/4"	10S-H10-080SL
Hex bolt 3/8-16 X 3/4	10S-B10-046
Latch spring washer	10S-H10-048LL
Latch compression spring	10S-H10-009
Link for L-Latch	10S-H10-051LL
Latch for L-Latch	10S-H10-015LL
Spring pin	10S-10-012
Upper latch body L-Latch	10S-H10-19ULL
Landing indicator bushing	10S-10-016
Landing shoulder	10S-H10-19S
Stainless steel ball 22mm	10S-10-052
Lower latch body	10S-H10-19L
Hex nut	10S-H10-020
Spindle shaft	10S-H10-021
Shut-off valve hard	10S-H10-22H
1 Shut-off valve soft	10S-H10-22S
Valve adjusting washer	10S-H10-023
Thrust bearing	10S-H10-025
Spindle bearing	10S-H10-026
Hanger bearing	10S-N10-025
Compression spring	10S-H10-028
Stover lock nut	10S-H10-030
Inner tube cap	10S-H10-31B
Check valve body	10S-10-31C
Grease fitting 1/4" - 28 straight	10S-10-31G
Stainless steel ball 22mm	10S-10-052



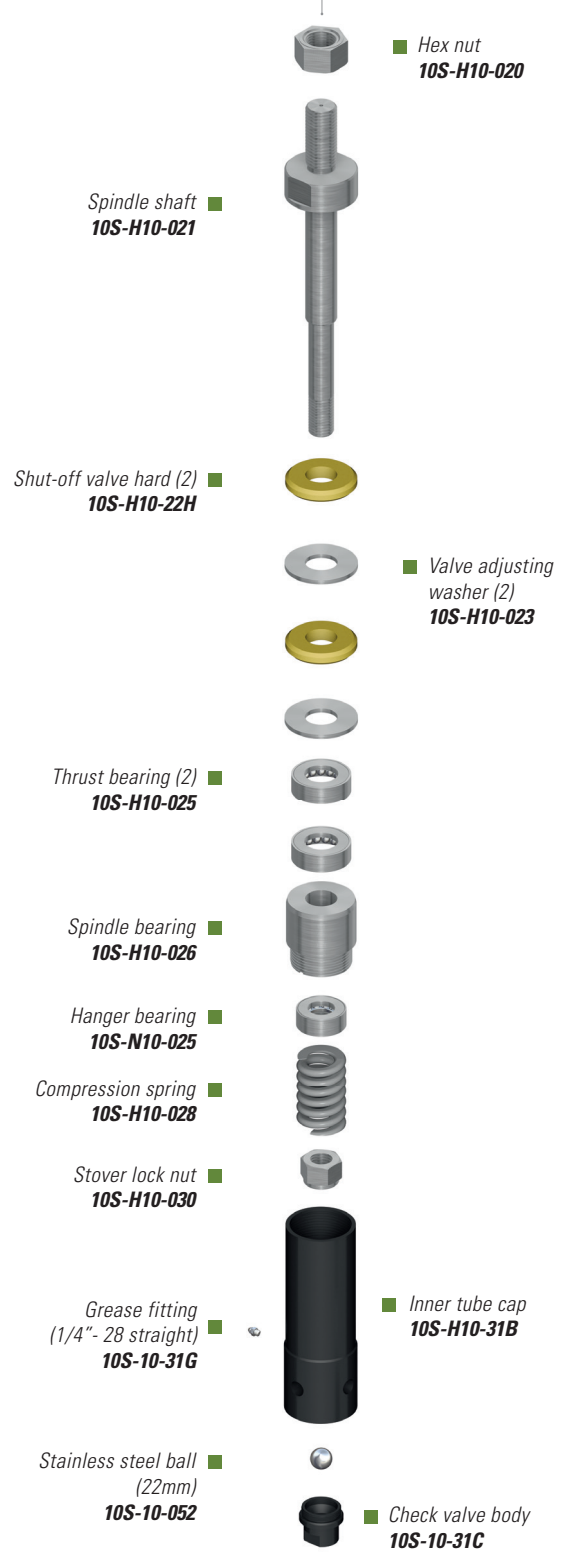
1 Optional soft shut-off valves are also available. Please use the following part number 10S-H10-22S (soft) to place an order.

OWL L-LATCH SURFACE | HWL PARTS

B



A



C