

OWL L-LATCH SURFACE HEAD ASSEMBLY | **NWL**

ASSY	DESCRIPTION	PART NUMBER	WEIGHT	
			lb	kg
A	Head assy NWL L-Latch	10S-N10-005LL	20.04	10.34
B	L-Latch conversion kit	10S-N10-006LL	8.80	4.00
C	Inner tube cap assy	10S-N10-031	2.20	1.40

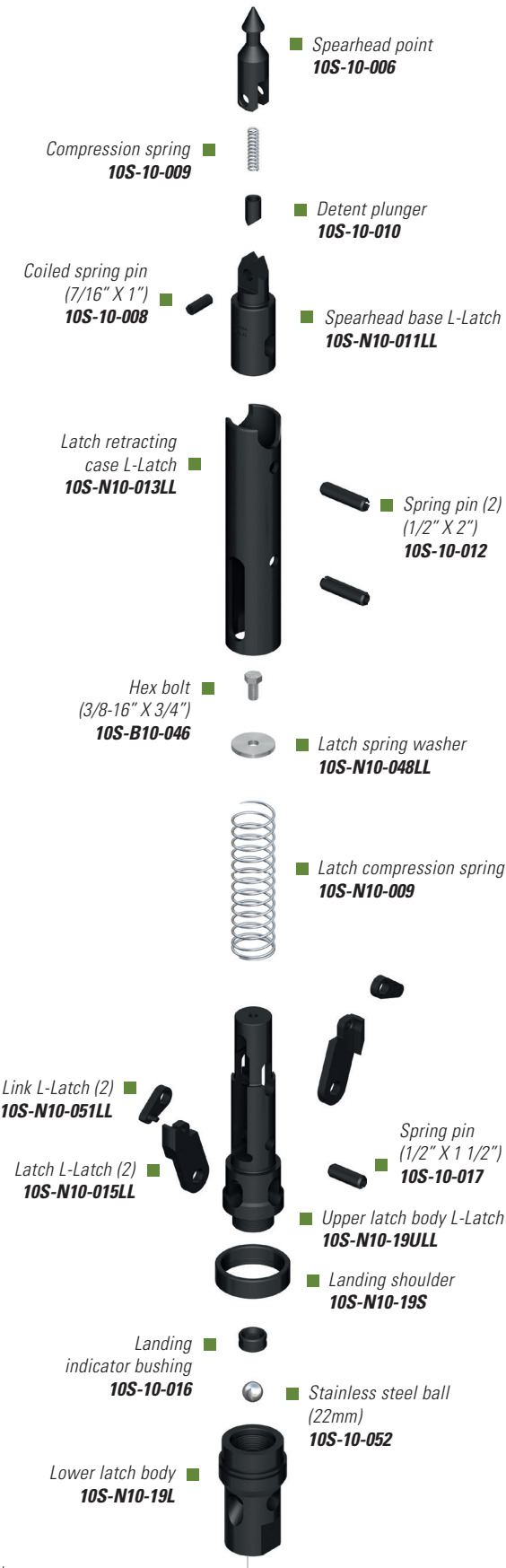
DESCRIPTION	PART NUMBER
Spearhead point	10S-10-006
Compression spring	10S-10-009
Detent plunger	10S-10-010
Coiled spring pin 7/16" x 1"	10S-10-008
Spearhead base L-Latch	10S-N10-011LL
Latch retracting case L-Latch	10S-N10-013LL
Spring pin (2) 1/2" x 2"	10S-10-012
Hex bolt 3/8-16 X 3/4	10S-B10-046
Latch spring washer	10S-N10-048LL
Latch compression spring	10S-N10-009
Link for L-Latch (2)	10S-N10-051LL
Latch for L-Latch (2)	10S-N10-015LL
Upper latch body L-Latch	10S-N10-19ULL
Spring pin 1/2" x 1 1/2"	10S-10-017
Landing shoulder	10S-N10-19S
Landing indicator bushing	10S-10-016
Stainless steel ball 22mm	10S-10-052
Lower latch body	10S-N10-19L
Hex nut	10S-N10-020
Spindle shaft	10S-N10-021
Shut-off valve hard (2)	10S-N10-22H
<b>1</b> Shut-off valve soft (2)	10S-N10-22S
Valve adjusting washer (2)	10S-N10-023
Thrust bearing	10S-N10-025
Spindle bearing	10S-N10-026
Hanger bearing	10S-N10-027
Compression spring	10S-N10-028
Stover lock nut	10S-N10-030
Inner tube cap	10S-N10-31B
Grease fitting 1/4" - 28 straight	10S-10-31G
Stainless steel ball 22mm	10S-10-052
Check valve body	10S-10-31C



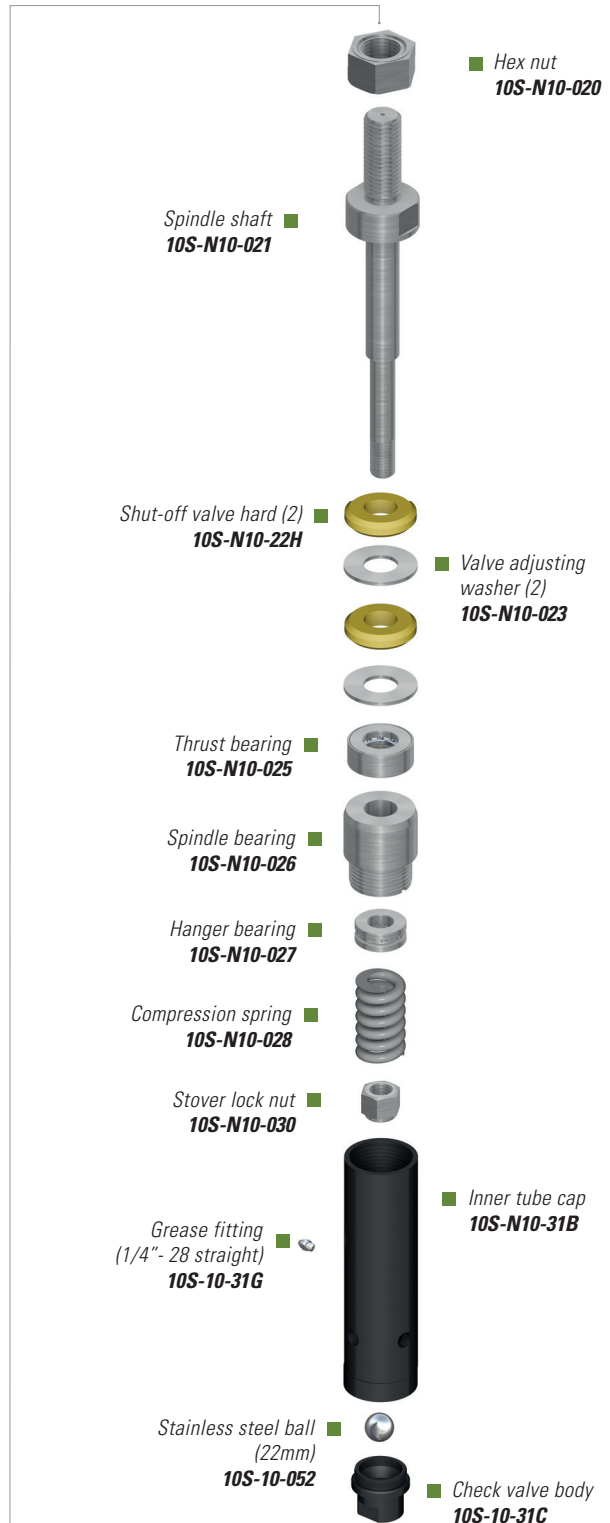
**1** Optional soft shut-off valves are also available. Please use the following part number 10S-N10-22S (soft) to place an order.

## OWL L-LATCH SURFACE | NWL PARTS

B



A



C