

Exploration core drilling diamond tools | RS++

Superior products



RS++[®] line of reaming shells

Introducing our new RS++[®] reaming shell

Longer life than any other shell

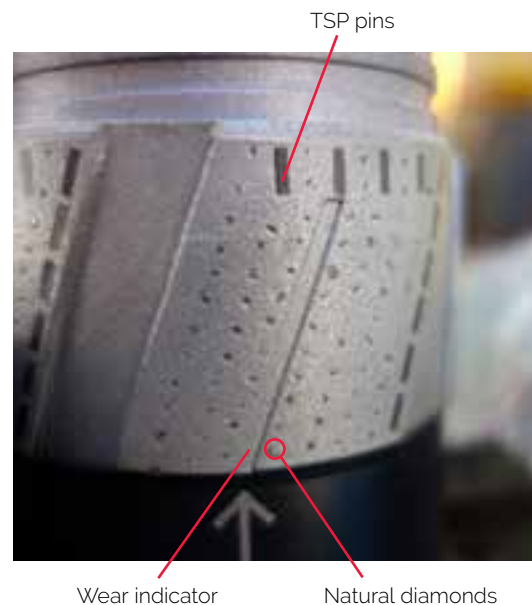
Epiroc introduces an all new RS++[®] reaming shell boosting the number of meters drilled while keeping straighter boreholes. The incorporation of the new matrix into the RS++[®] provides improved wear resistance.

+ SupraSpherical technology

– for exceptional life span

+ Wear indicator

– for easy wear monitoring



SupraSphericals – dynamic protection



Wear indicator – no gauge checks

SupraSpherical technology

RS++[®] features a reinforced diamond ring surface using natural diamonds and a unique SupraSpherical technology provides dynamic protection of the surface.

Our new RS++[®] delivers outstanding results - the combination of natural diamonds and SupraSpherical technology clearly delivers advanced resistance to wear onto the entire surface of diamond ring.

All RS++[®] reaming shells have leading edge of diamond ring reinforced with large thermally-stable Polycrystalline (TSP) diamond pins for better wear pattern control and to maximize diamond volume in high wear zones.

Wear indicator

Also, new RS++[®] features patent pending wear indicator bars to identify how much life is remaining. This helps to maintain better control of the borehole OD. The wear indicator gradually wears away over time, and when it disappears, that is the indication that the reaming shell needs to be replaced, see Figure 1. RS++[®] reaming shell is available in all sizes.

Surface set reaming shells

Epiroc reaming shells are manufactured to withstand difficult drilling conditions and provide long life. Surface set reaming shells in all common DCDMA sizes are a stock item. Impregnated reaming shells and reaming shells in full hole body profile (recommended for very abrasive ground) are also available. Reaming shells are available in industry standard lengths of 15 cm (1-ring /6"), 25 cm (2-ring/10") and 46 cm (3-ring/18 3/8"). Both

2 and 3 ring type are optional to increase core barrel stabilization when hole deviation needs to be minimized. It extends shell life at the same time. For those options inner tube extension has to be installed to compensate lenght difference between outer and inner tube.

A combination of Polycrystalline Diamonds (PCD) and natural diamonds are utilized for most standard reaming shells and all heavy duty reaming shells.



REAMING SHELL DESCRIPTION

