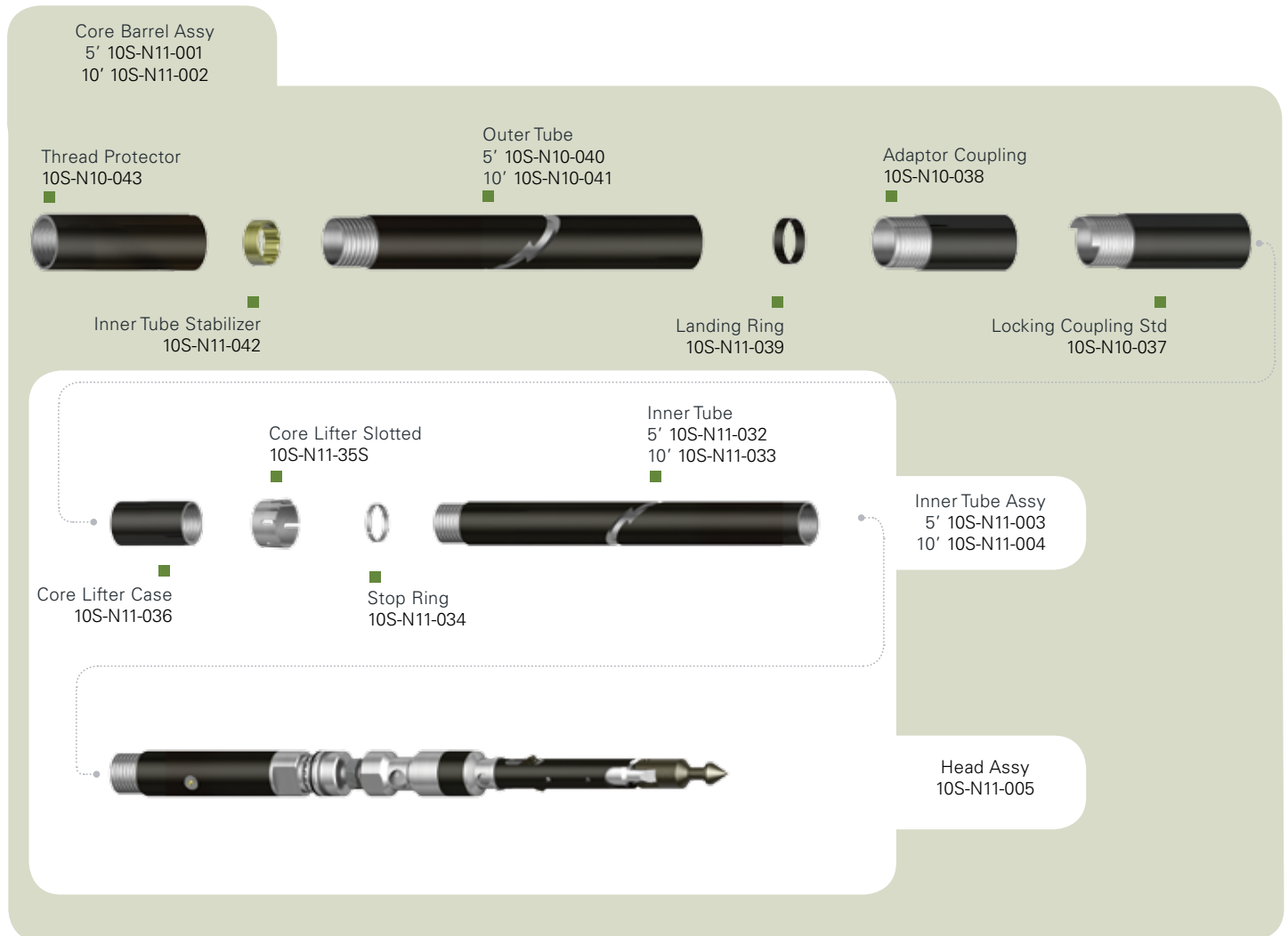


OWL CORE BARREL

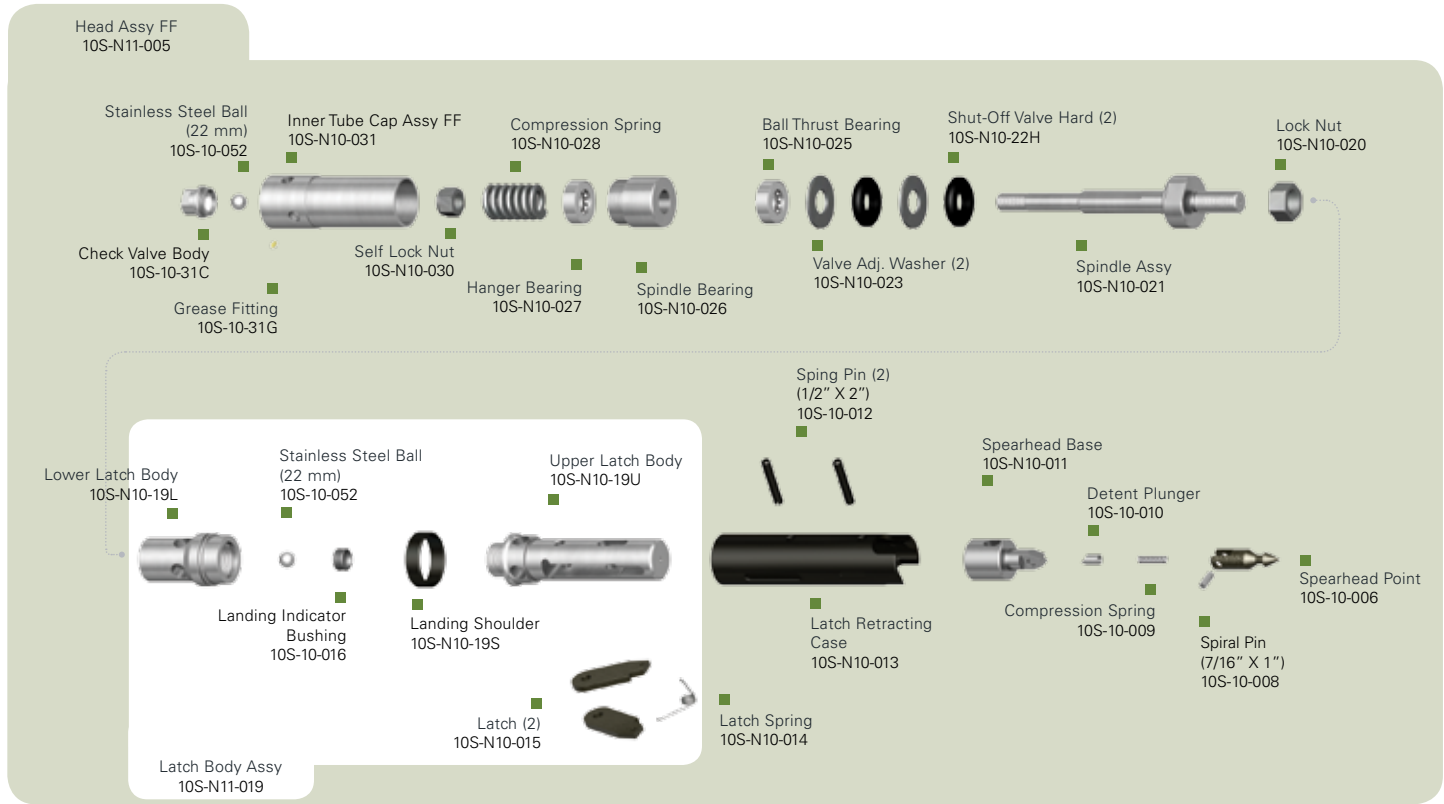


	DESCRIPTION	PART NO.
	CORE BARREL ASSY FF 5'	10S-N11-001
	CORE BARREL ASSY FF 10'	10S-N11-002
	INNERTUBE ASSY FF 5'	10S-N11-003
	INNERTUBE ASSY FF 10'	10S-N11-004
	HEAD ASSY FF	10S-N11-005
1	INNERTUBE 5'	10S-N11-032
	INNERTUBE 10'	10S-N11-033
	STOP RING	10S-N11-034
2	CORE LIFTER SLOTTED	10S-N11-35S
	CORE LIFTER CASE	10S-N11-036
3	LOCKING COUPLING STDW/TANG	10S-N10-037
4	ADAPTOR COUPLING	10S-N10-038
	LANDING RING	10S-N11-039
5	OUTERTUBE 5'	10S-N10-040
	OUTERTUBE 10'	10S-N10-041
	INNERTUBE STABILIZER	10S-N11-042
	THREAD PROTECTOR	10S-N10-043

To get the core efficiently and successfully, start with Fordia's standard NWL core barrel. Cost-efficient and reliable, this wire line device comprises a complete head assembly as well as all inner tube and outer tube components. It is also fully compatible with other corresponding wire line series. Spare parts are always available from Fordia.

- 1 Optional chrome plated inner tube is also available. Please refer to pages 34-35 of the Down The Hole leaflet for more detailed information.
- 2 Optional diamond coating as well as broached core lifters are also available. Please contact your sales representative for more details.
- 3 Optional full-hole and carbide locking couplings are also available. Please refer to page 44 of the Down The Hole leaflet for more detailed information.
- 4 Optional diamond adaptor coupling is also available. Please refer to page 45 of the Down The Hole leaflet.
- 5 Optional full-hole and chrome plated outer tubes are also available. Please refer to page 36-37 of the Down The Hole leaflet.

OWL CORE BARREL



DESCRIPTION	PART NO.
HEAD ASSY FF	10S-N11-005
SPEARHEAD POINT	10S-10-006
SPIRAL PIN (7/16" x 1")	10S-10-008
COMPRESSION SPRING	10S-10-009
DETENT PLUNGER	10S-10-010
SPEARHEAD BASE	10S-N10-011
SPRING PIN (1/2" X 2")	10S-N10-012
LATCH RETRACTING CASE	10S-N10-013
LATCH SPRING	10S-N10-014
LATCH (2)	10S-N10-015
LANDING INDICATOR BUSHING	10S-10-016
STAINLESS STEEL BALL 22mm	10S-10-052
SPRING PIN (1/2" X 1-1/2")	10S-N10-017
LATCH BODY ASSY	10S-N11-019
UPPER LATCH BODY	10S-N10-19U
LANDING SHOULDER	10S-N10-19S
LOWER LATCH BODY	10S-N10-19L
LOCK NUT	10S-N10-020
SPINDLE ASSY	10S-N10-021
SHUT-OFF VALVE HARD (2)	10S-N10-22H
VALVE ADJUSTING WASHER (2)	10S-N10-023
BALL THRUST BEARING	10S-N10-025
SPINDLE BEARING	10S-N10-026
HANGER BEARING	10S-N10-027
COMPRESSION SPRING	10S-N10-028
SELF LOCK NUT	10S-N10-030
INNERTUBE CAP ASSY FF	10S-N10-031
GREASE FITTING	10S-10-31G
STAINLESS STEEL BALL 22mm	10S-10-052
CHECK VALVE BODY	10S-10-31C

Discover Fordia's Outstanding Wire Line (OWL) series with this NWL2 head assembly. Every component is manufactured with the highest quality workmanship and is designed to be fully compatible with the corresponding core barrels and parts of other manufacturers.

- Knuckle-head for easier manipulation and less stress on the wireline
- Two-piece latch body with reversible landing shoulder for greater lifespan
- Easily adjustable to optimize space between core lifter case and drill bit
- Can be used for dry-hole descent
- Fully compatible with other manufacturers' core barrels and parts

1 Optional shut-off valves (soft) are also available. Please use the following part number 10S-N10-22S to place an order.