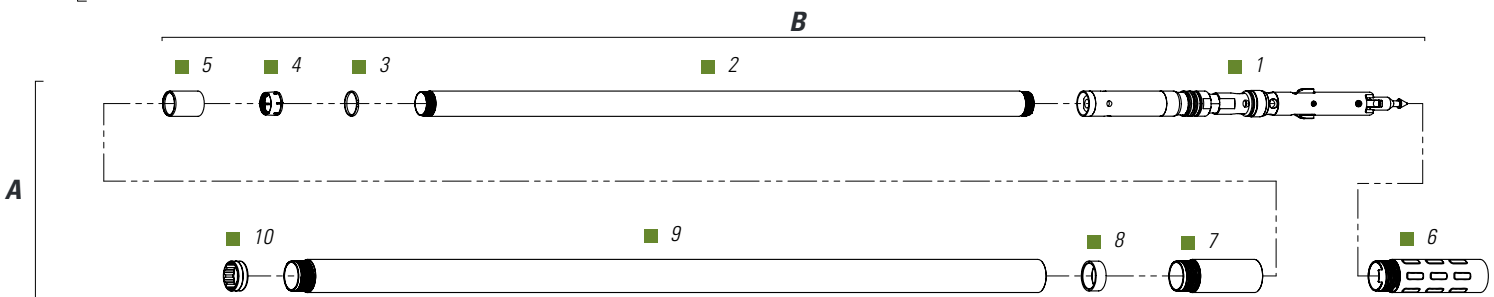


OWL V-LATCH SURFACE CORE BARREL | BWL - NWL - HWL - PWL

ASSY.	DESCRIPTION	PART NUMBER			
		BWL	NWL	HWL	PWL
A	Core barrel assy 10 ft (3m) OWL V-Latch	10S-B10-002VL	10S-N10-002VL	10S-H10-002VL	10S-P10-002VL
A	Core barrel assy 5 ft (1.5m) OWL V-Latch	10S-B10-001VL	10S-N10-001VL	10S-H10-001VL	10S-P10-001VL
B	Inner tube assy 10 ft (3m)	10S-B10-004VL	10S-N10-004VL	10S-H10-004VL	10S-P10-004VL
B	Inner tube assy 5 ft (1.5m)	10S-B10-003VL	10S-N10-003VL	10S-H10-003VL	10S-P10-003VL

POSITION	DESCRIPTION	PART NUMBER			
		BWL	NWL	HWL	PWL
1	Head assy OWL V-Latch	10S-B10-005VL	10S-N10-005VL	10S-H10-005VL	10S-P10-005VL
2	Inner tube 10 ft (3m)	10S-B10-033	10S-N10-033	10S-H10-033	10S-P10-033
2	OPTION Inner tube 10 ft (3m) chrome-plated	10S-B10-033CP	10S-N10-033CP	10S-H10-033CP	10S-P10-033CP
2	Inner tube 5 ft (1.5m)	10S-B10-032	10S-N10-032	10S-H10-032	10S-P10-032
2	OPTION Inner tube 5 ft (1.5m) chrome-plated	10S-B10-032CP	10S-N10-032CP	10S-H10-032CP	10S-P10-032CP
3	Stop ring	10S-B10-034	10S-N10-034	10S-H10-034	10S-P10-034
4	Core lifter slotted	10S-B10-35S	10S-N10-35S	10S-H10-35S	10S-P10-35S
4	OPTION Core lifter broached	10S-B10-35B	10S-N10-35B	10S-H10-35B	10S-P10-35B
4	OPTION Core lifter slotted diamond coated	10S-B10-35SDC	10S-N10-35SDC	10S-H10-35SDC	10S-P10-35SDC
4	OPTION Core lifter broached diamond coated	10S-B10-35BDC	10S-N10-35BDC	10S-H10-35BDC	10S-P10-35BDC
4	OPTION Core lifter basket type	10S-B10-35BT	10S-N10-35BT	10S-H10-35BT	10S-P10-35BT
5	Core lifter case	10S-B10-036	10S-N10-036	10S-H10-036	10S-P10-036
6	Standard locking coupling	10S-B10-037	10S-N10-037	10S-H10-037	10S-P10-037NS
6	OPTION Diamond locking coupling	L-B-WR-1B-EP	L-N-WR-1B-EP	L-H-WR-1B-EP	L-P-WR-1B-EP
6	OPTION Carbide inserts locking coupling	L-B-CB-1B-EP	L-N-CB-1B-EP	L-H-CB-1B-EP	L-P-CB-1B-EP
6	OPTION Full-hole locking coupling	10S-B10-037H	10S-N10-037H	10S-H10-037H	10S-P10-037H
7	Standard adaptor coupling	10S-B10-038	10S-N10-038	10S-H10-038	10S-P10-038NS
7	OPTION Diamond adaptor coupling	A-B60-WR-1B-EP	A-N60-WR-1B-HA	A-H60-WR-1B-HA	A-P60-WR-1B-HA
8	Landing ring	10S-B10-039	10S-N10-039	10S-H10-039	10S-P10-039NS
9	Outer tube 10 ft (3m)	10S-B10-041	10S-N10-041	10S-H10-041	10S-P10-041NS
9	OPTION Outer tube 10 ft (3m) chrome-plated	10S-B10-041CP	10S-N10-041CP	10S-H10-041CP	10S-P10-041CP
9	OPTION Outer tube 10 ft (3m) full-hole	10S-B10-041H	10S-N10-041H	10S-H10-041H	10S-P10-041H
9	OPTION Outer tube 10 ft (3m) chrome-plated full-hole	10S-B10-041HCP	10S-N10-041HCP	10S-H10-041HCP	10S-P10-041HCP
9	Outer tube 5 ft (1.5m)	10S-B10-040	10S-N10-040	10S-H10-040	10S-P10-040NS
9	OPTION Outer tube 5 ft (1.5m) chrome-plated	10S-B10-040CP	10S-N10-040CP	10S-H10-040CP	10S-P10-040CP
9	OPTION Outer tube 5 ft (1.5m) full-hole	10S-B10-040H	10S-N10-040H	10S-H10-040H	10S-P10-040H
9	OPTION Outer tube 5 ft (1.5m) chrome-plated full-hole	10S-B10-040HCP	10S-N10-040HCP	10S-H10-040HCP	10S-P10-040HCP
10	Inner tube stabilizer	10S-B10-042	10S-N10-042	10S-H10-042	10S-P10-042



* Other options are available, including extensions and protectors. Contact your Fordia representative for more details.